

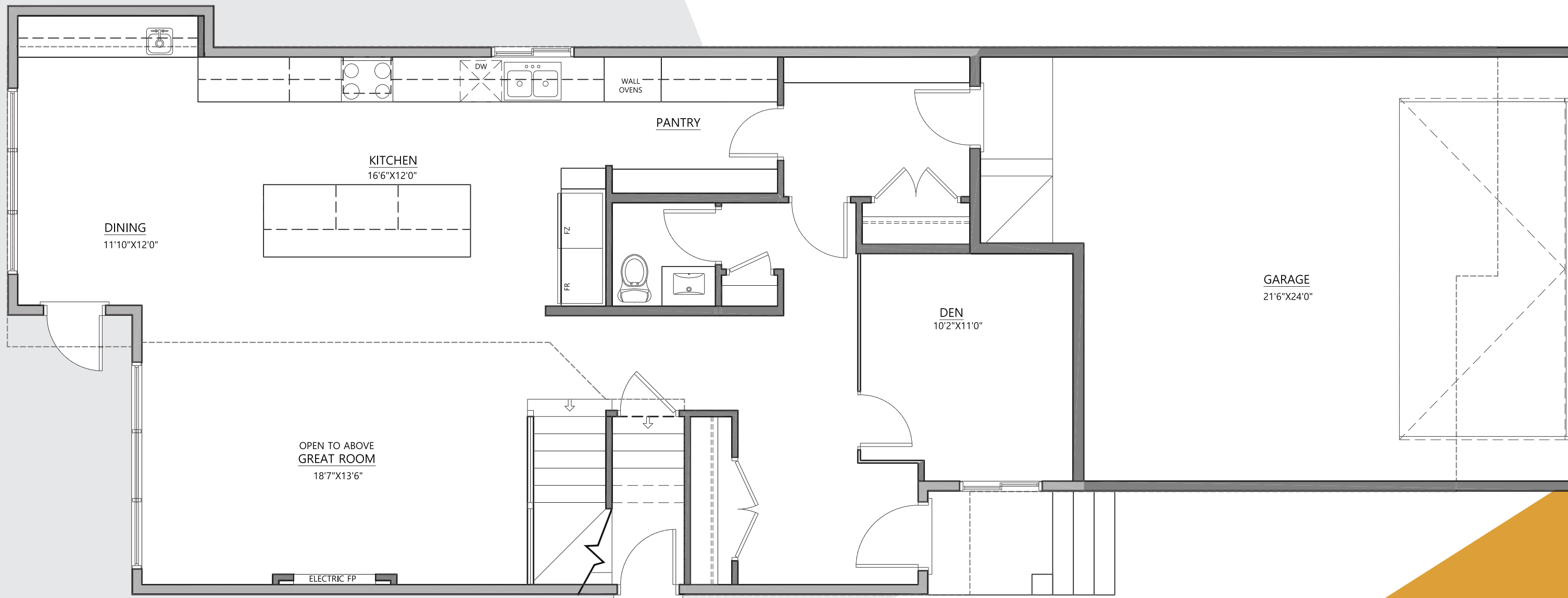
SOFIA

26 or 28
Pocket Lot

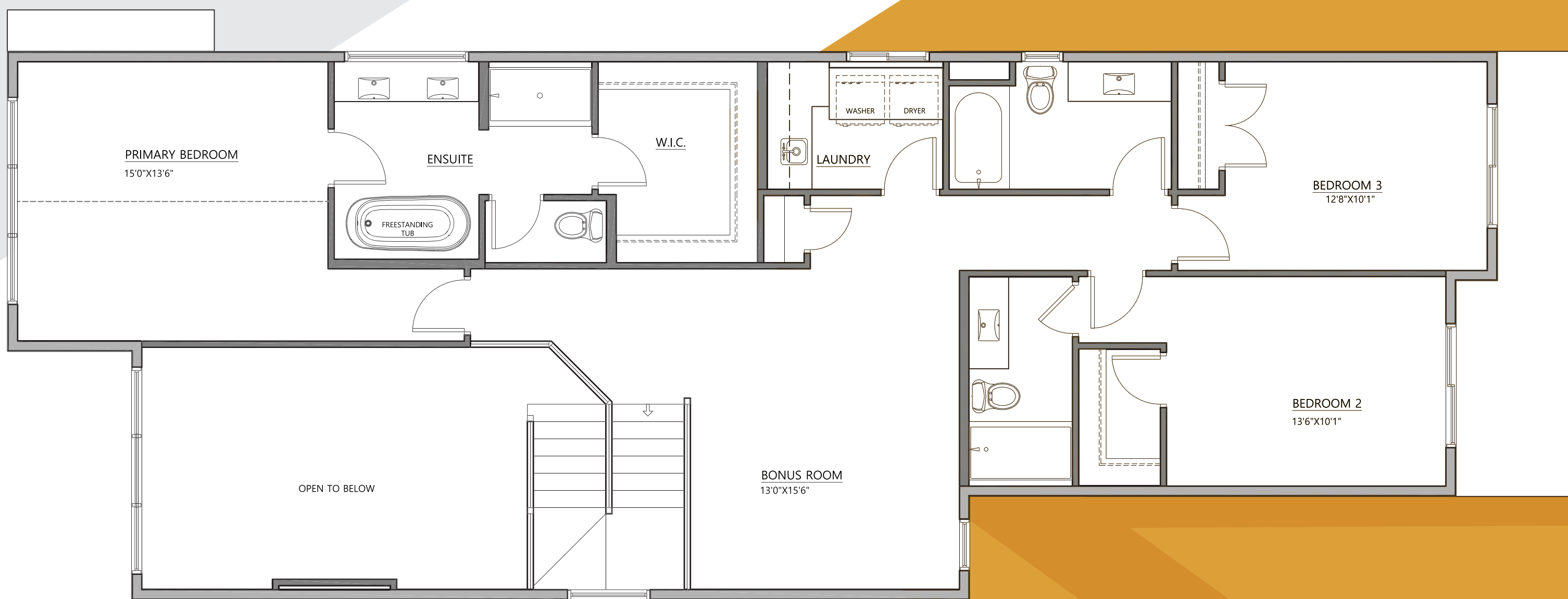
2681 Sq ft | 3 Bedrooms, 3.5 Baths



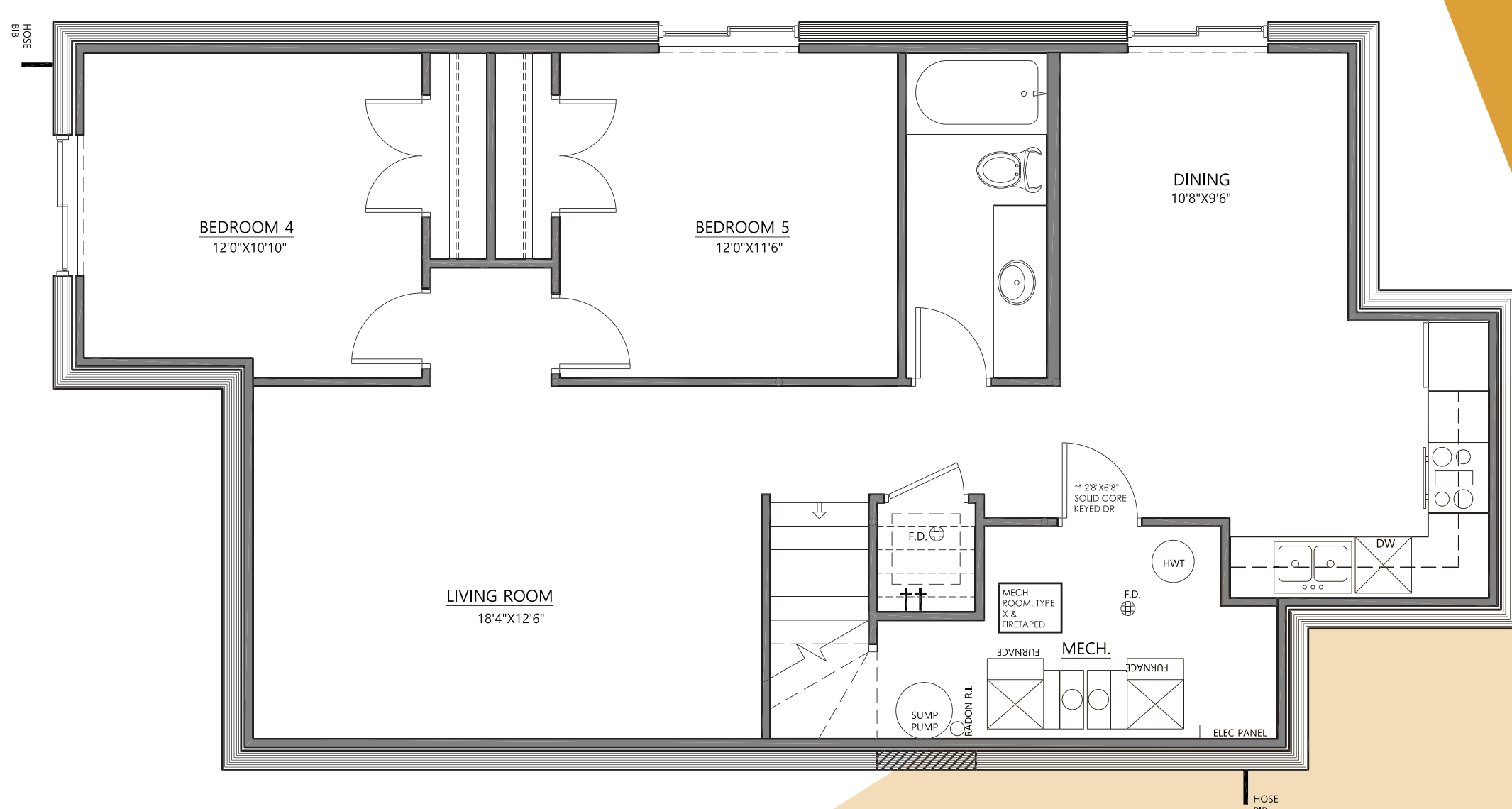
Main Floor 1232 sq. ft.



Upper Floor 1449 sq. ft.



Secondary Suite 1059 sq. ft.



SCAN FOR DETAILS



HIGHLIGHTS

- Prep kitchen with wall ovens
- Custom built-in dining bar with sink
- Open to above living room with electric fireplace
- Vaulted ceiling in primary bedroom
- * Optional 2 bedroom legal basement suite