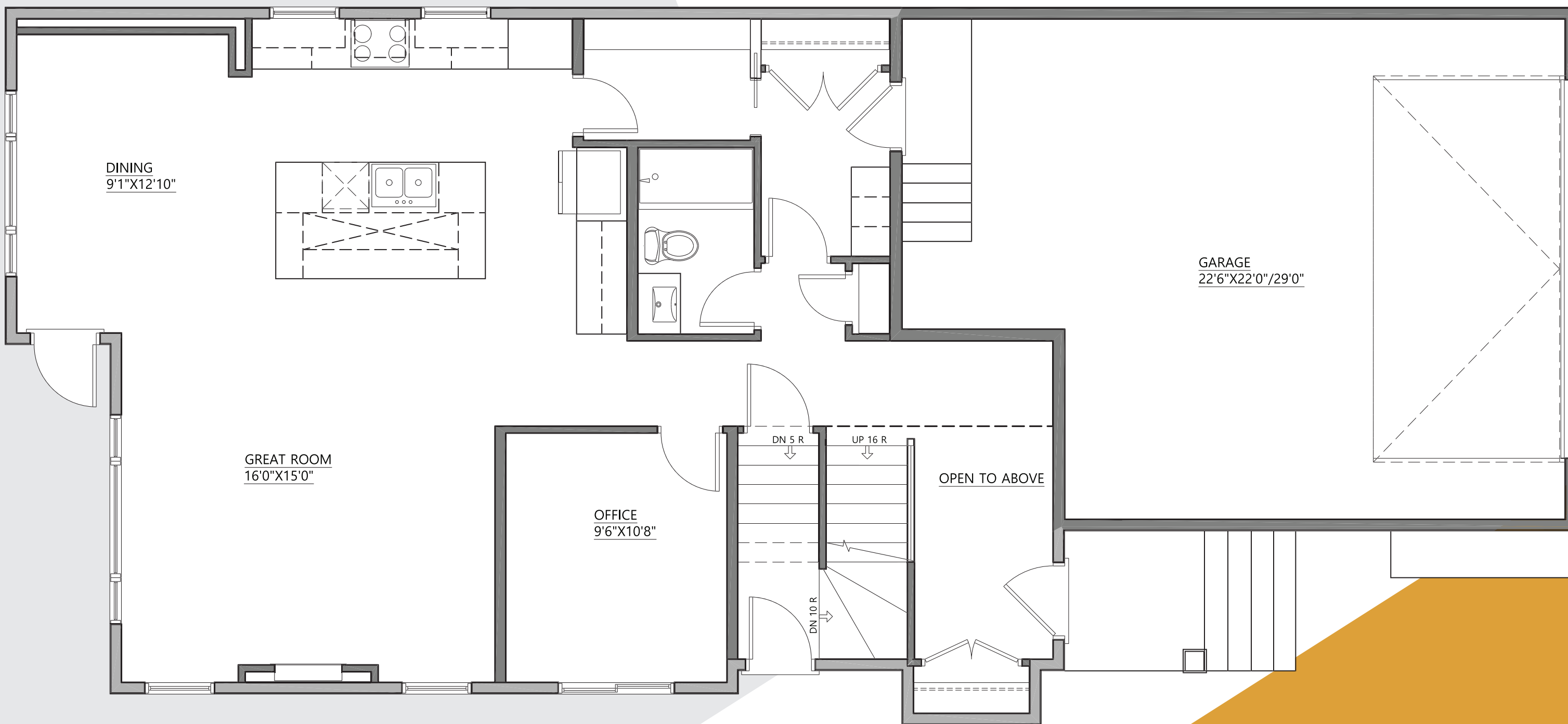


OLIVE ²⁸ Pocket Lot

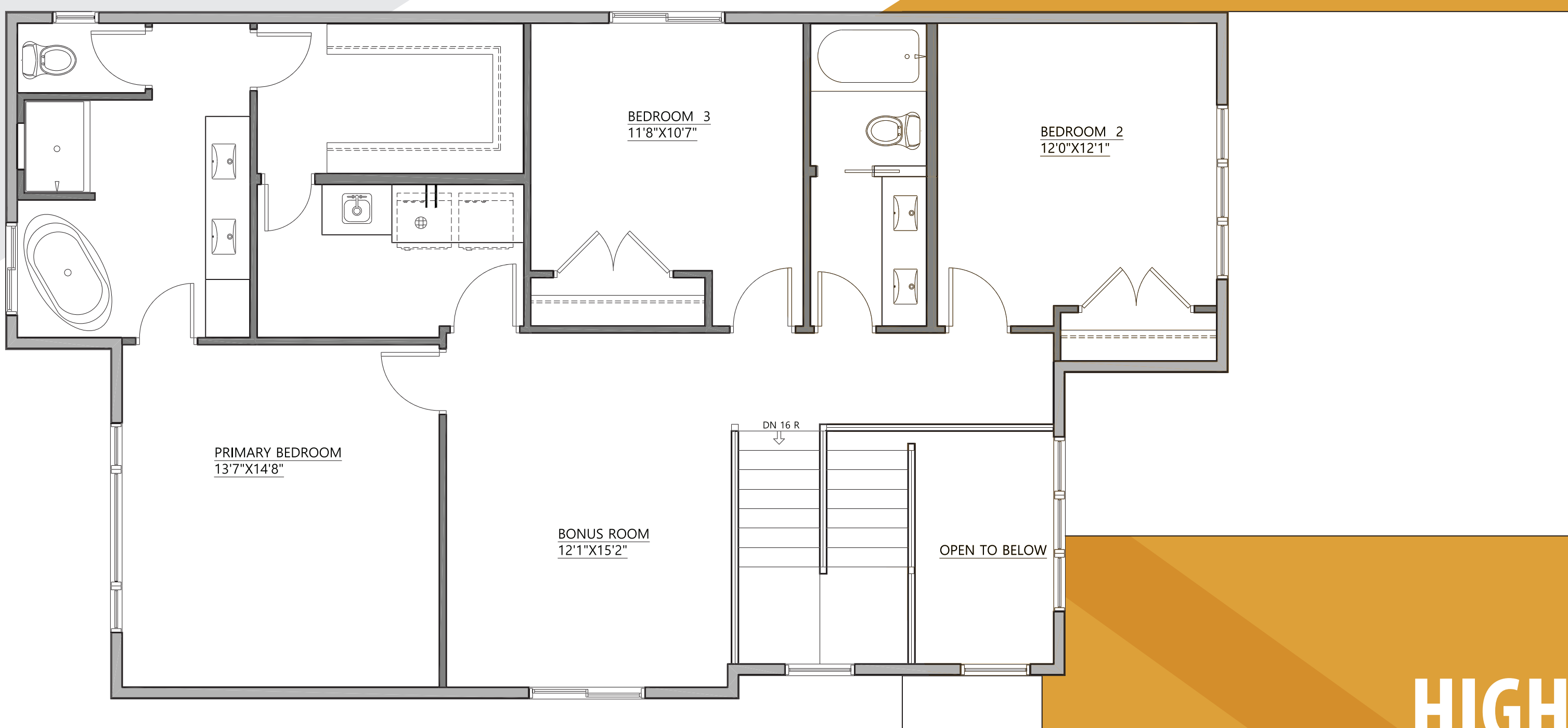
2486 Sq ft | 3 Bedrooms, 3 Baths



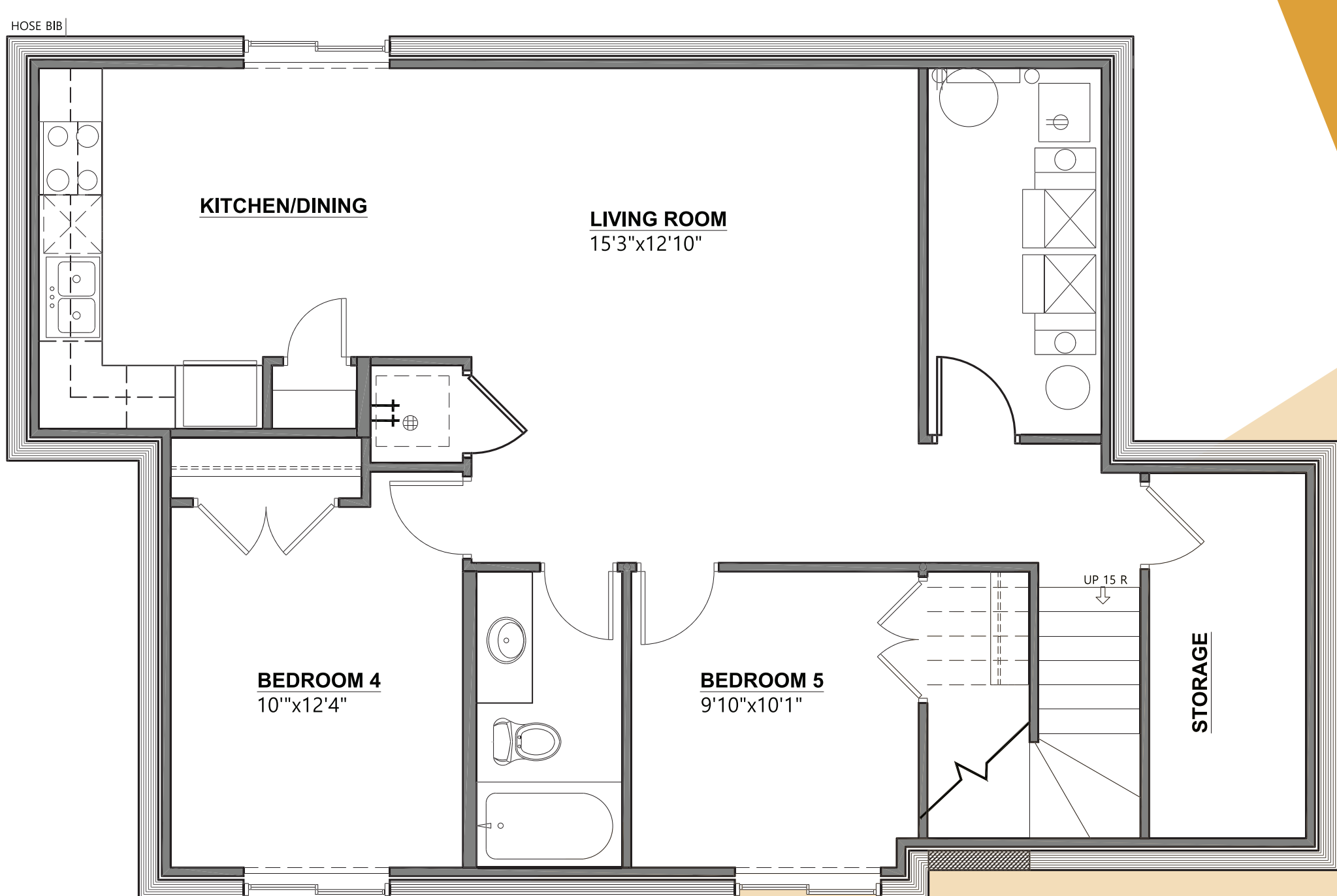
Main Floor 1177 sq. ft.



Upper Floor 1309 sq. ft.



Secondary Suite 1017 sq. ft.



SCAN FOR DETAILS



HIGHLIGHTS

- Main floor office
- Walk through pantry which can be turned to prep kitchen
- Open to above foyer
- Dual vanities in both bathrooms upstairs
- Primary suite with laundry access
- * Optional 2 bedroom legal basement suite