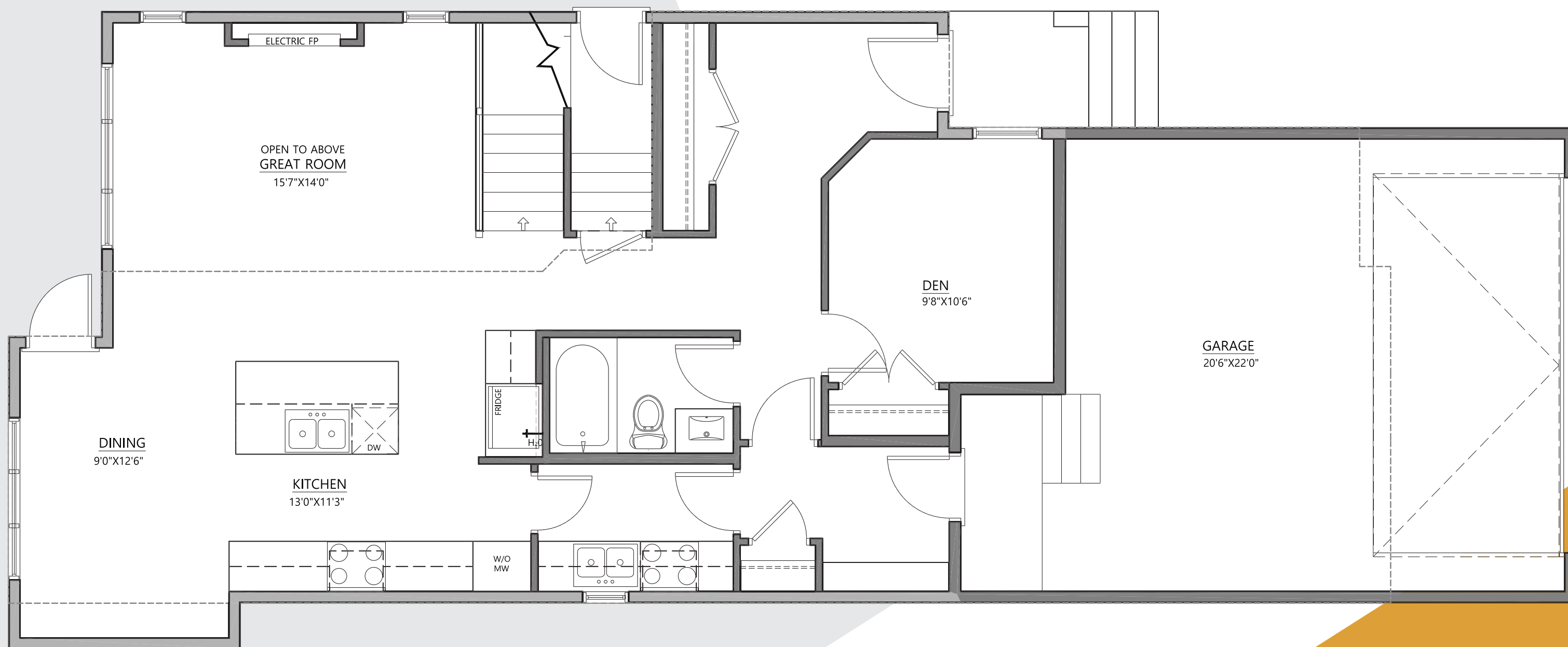


# ISABELLA 24\* or 26 Pocket Lot

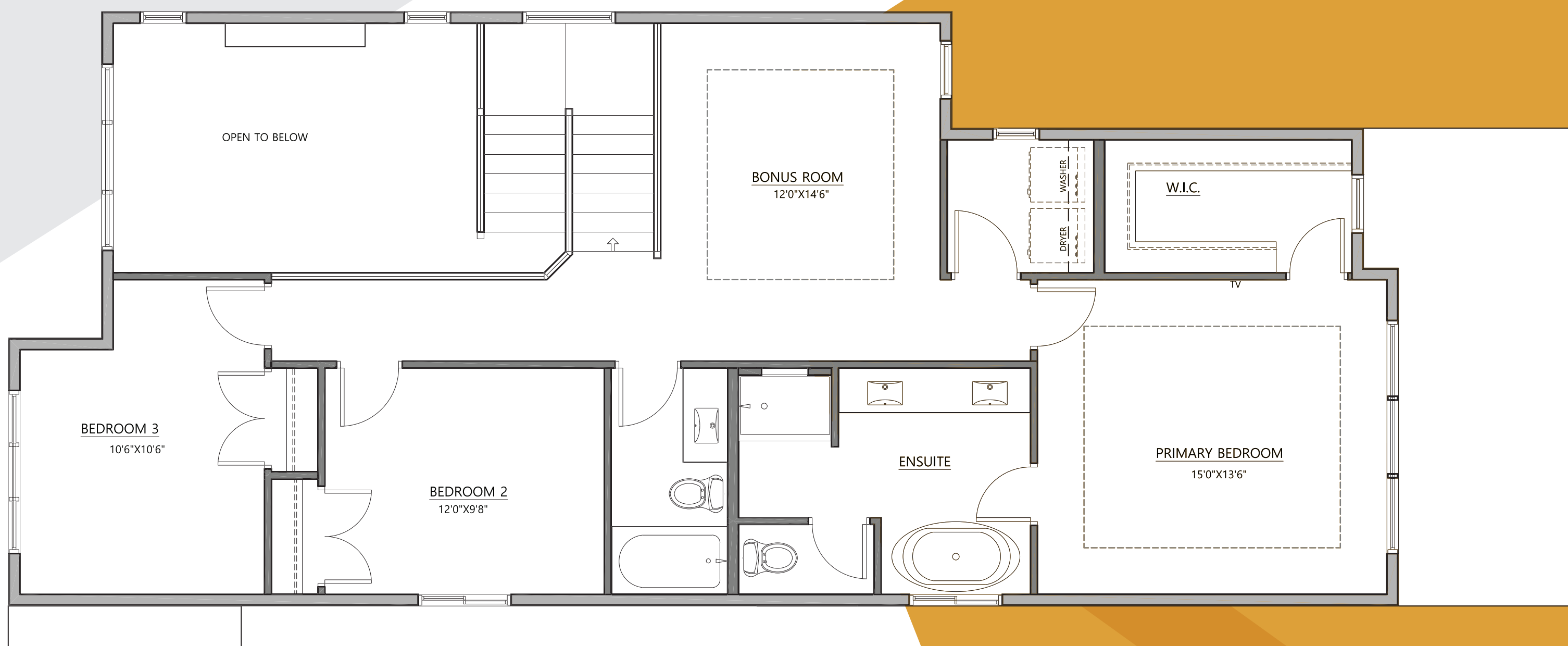
2251 Sq ft | 3 Bedrooms, 3 Baths



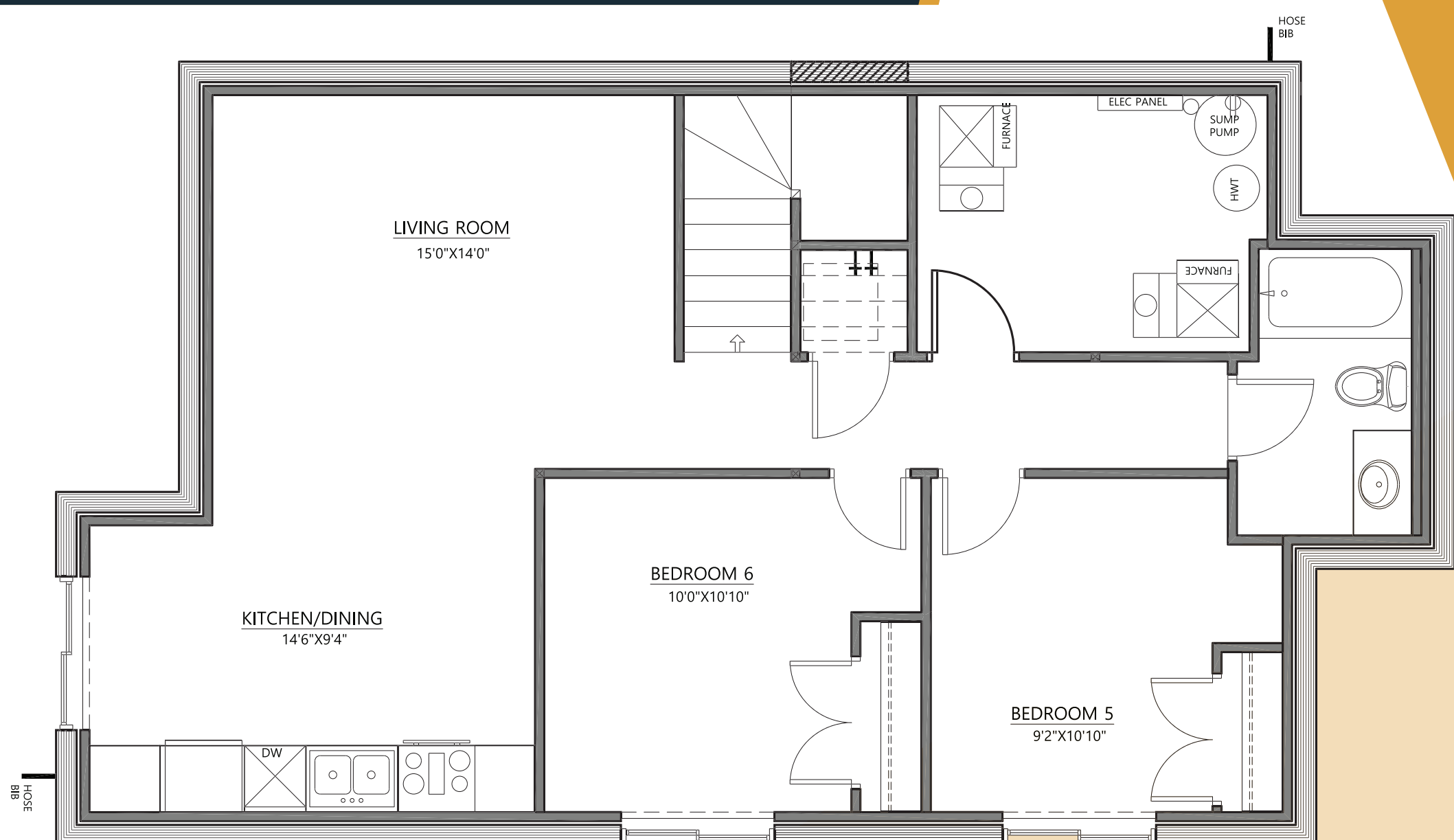
## Main Floor 1058 sq. ft.



## Upper Floor 1193 sq. ft.



## Secondary Suite 900 sq. ft.



SCAN FOR DETAILS



## HIGHLIGHTS

- Main floor private den
- Main floor full bath
- Walk through prep kitchen
- Open to above living room
- \* Optional extended cabinetry into dining room
- \* Optional 2 bedroom legal basement suite