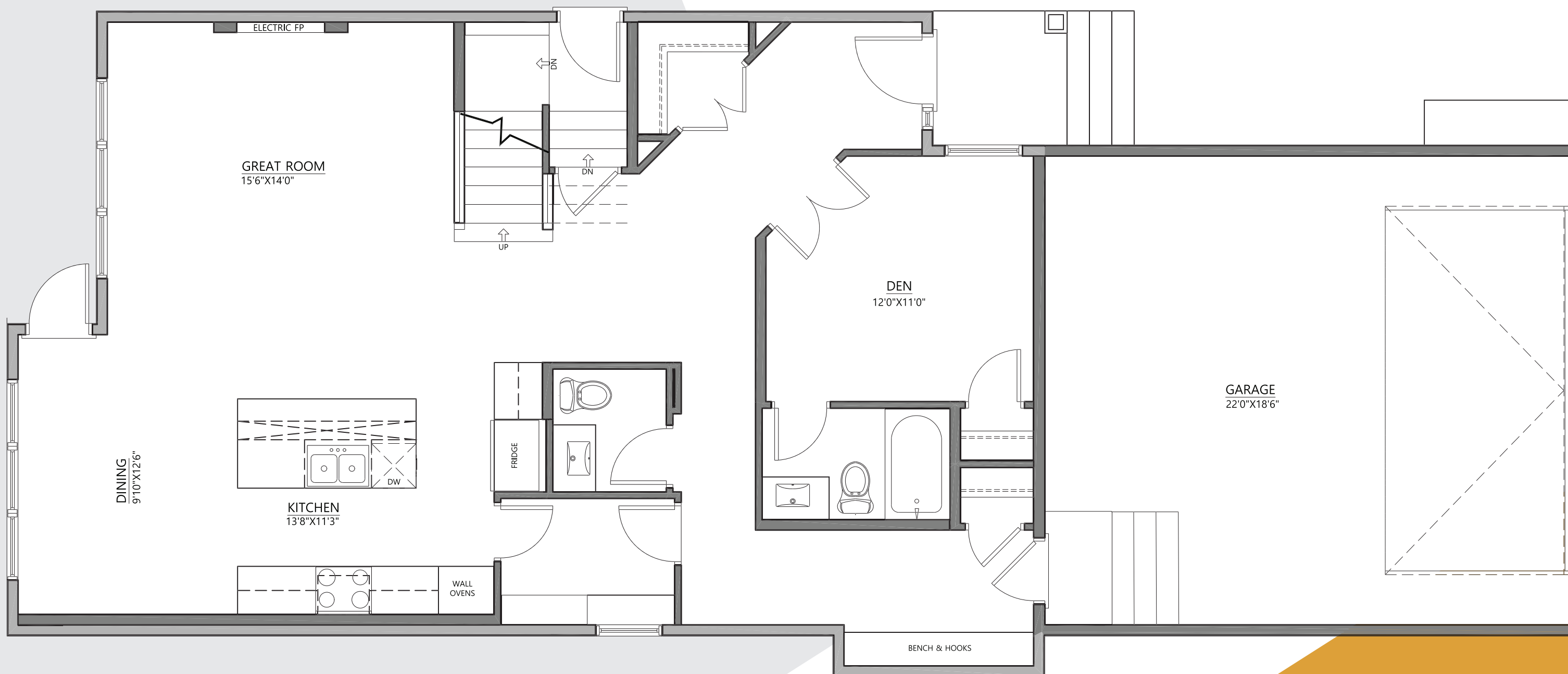


# EVELYN <sup>28</sup> Pocket Lot

2869 Sq ft | 4 Bedrooms, 4.5 Baths



## Main Floor 1233 sq. ft.



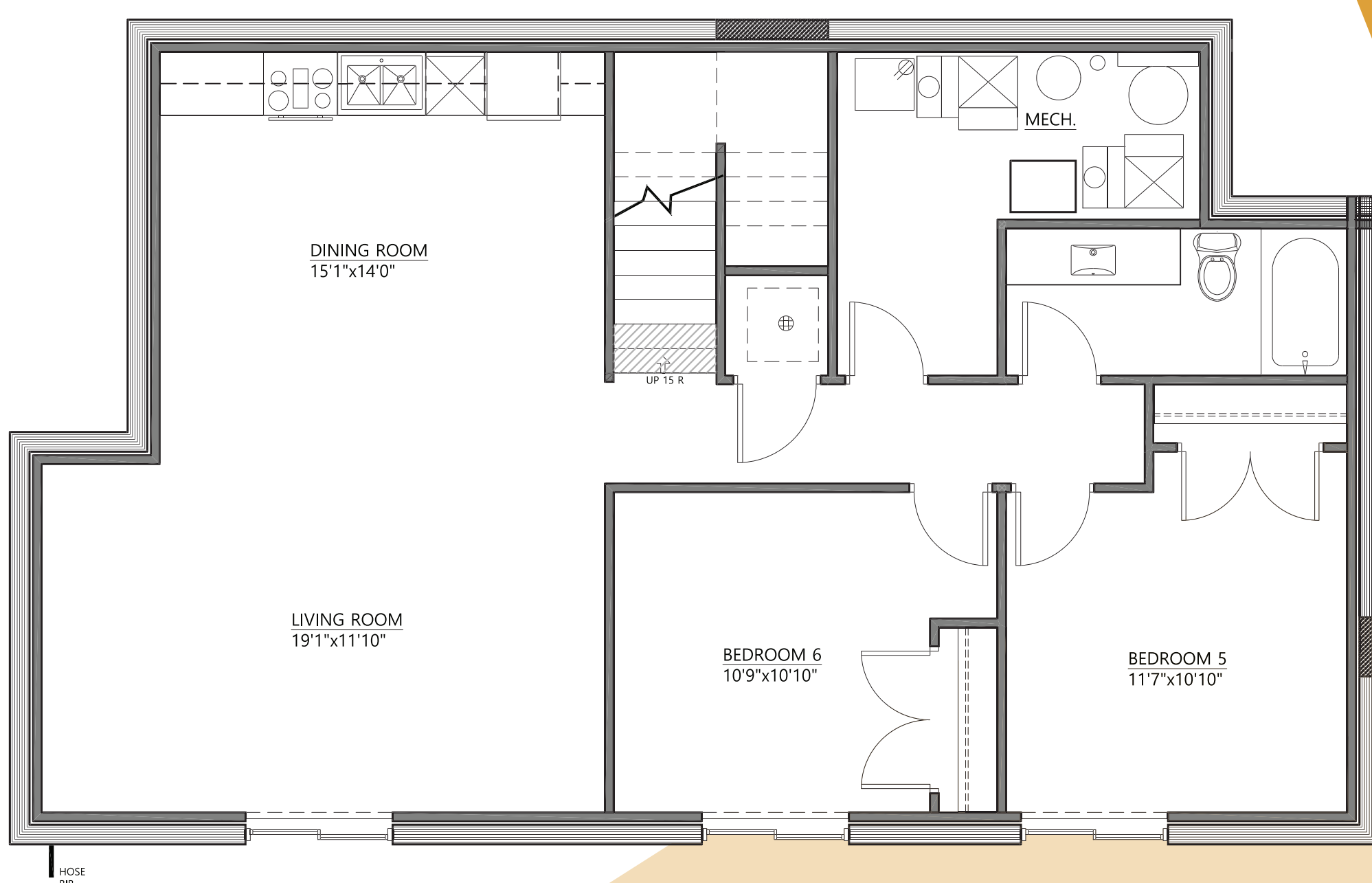
## Upper Floor 1636 sq. ft.



SCAN FOR DETAILS



## Secondary Suite 996 sq. ft.



## HIGHLIGHTS

- Great for larger families with 4 bedrooms and 3 full baths upstairs and a bonus room
- Main floor flex room with French doors and full bath access
- Walk through pantry which can be turned to prep kitchen
- Electric fireplace
- \* Optional 2 bedroom legal basement suite