



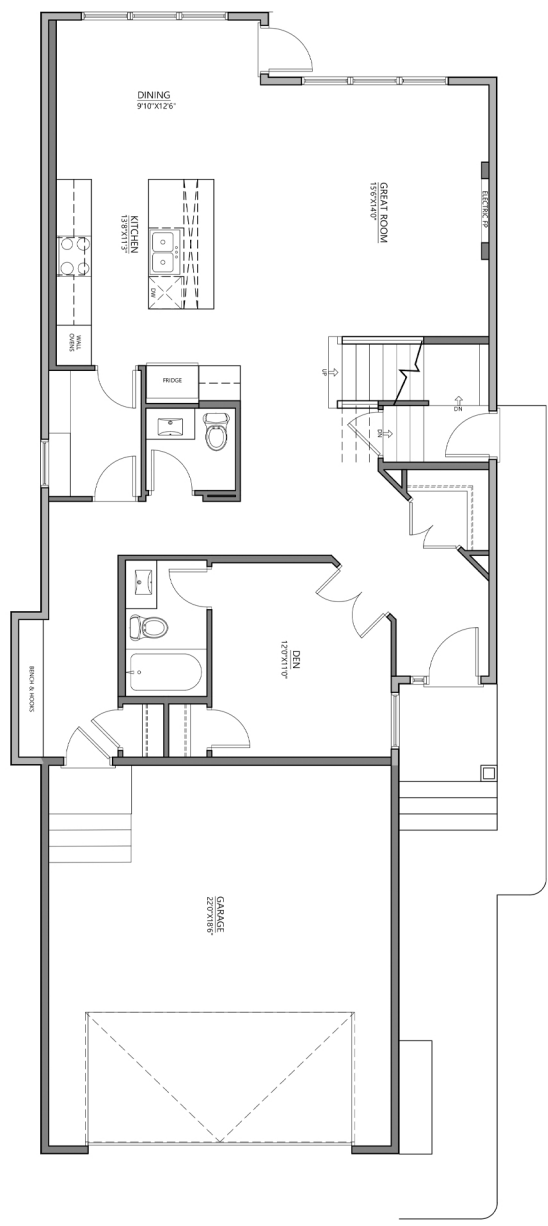
FIVESTARHOMES.CA
 @FIVESTARHOMESYEG

EVELYN

2869 sq. ft.

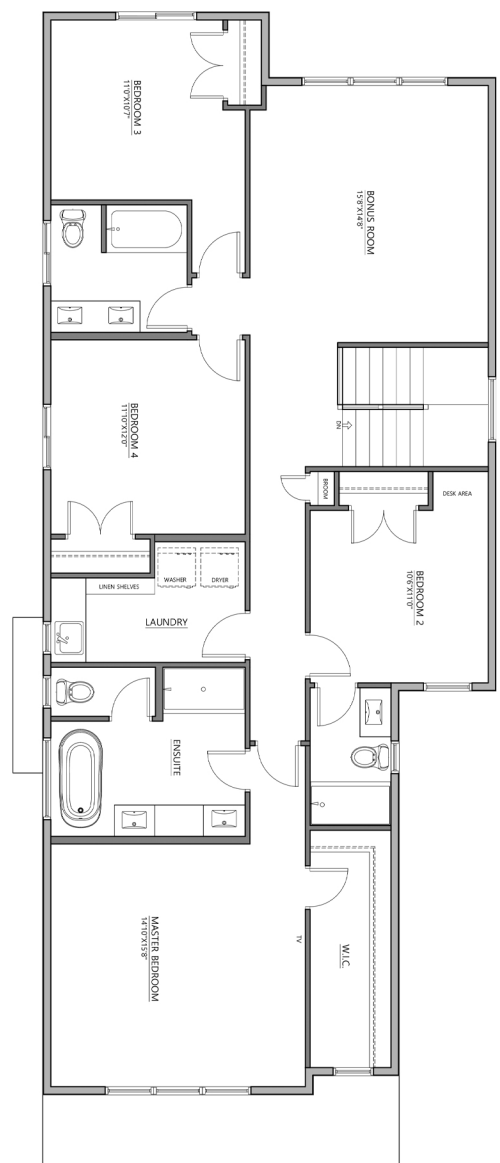
Main Floor Plan

1233 sq. ft.



Upper Floor Plan

1636 sq. ft.



Edmonton Region



*Floor plan dimensions and specifications are approximate and subject to change without notice.

Please email: sales@fivestarhomes.ca
 Please call: 780 903 1313

[f](#) [@](#) @FIVESTARHOMESYEG | WWW.FIVESTARHOMES.CA



FIVESTARHOMES.CA
@FIVESTARHOMESYEG

EVELYN
2869 sq. ft.

Basement (Optional)

996 sq. ft.

