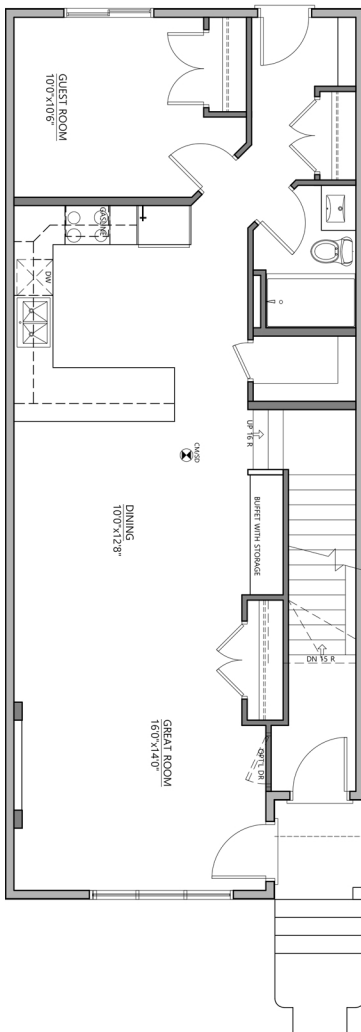




3734
ERLANGER DRIVE NW
 1935 sq. ft.

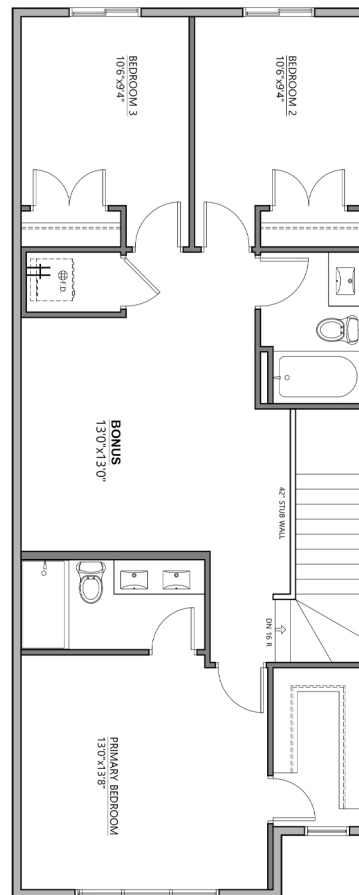
Main Floor Plan

962 sq. ft.



Upper Floor Plan

972 sq. ft.



Second Floor Plan:

- Bedroom 4: 11'6" x 12'3"
- Bedroom 5: 14'2" x 10'0"
- Living Room: 17'0" x 14'4"
- Bathroom
- Hallway
- Staircase (UP TO 3)
- Kitchen
- Dining Area
- Back Porch
- Front Porch
- Large Closet
- TV
- Fireplace
- Refrigerator
- Stove
- Sink
- Shower
- Toilet
- Vanity
- Door
- Window
- Archway
- Staircase (DOWN TO 1)

Floor plan of the main house. The plan shows a large living area with a fireplace (FIRE PLACE) and a large window (16'0" X 7'0" OVERHEAD GARAGE DOOR). The kitchen area includes a furnace (FURNACE) and a water heater (HWT). The bathroom (BATH) is located adjacent to the kitchen. The plan also shows a central hallway and a large window (16'0" X 7'0" OVERHEAD GARAGE DOOR) on the left side. The overall dimensions of the house are 28'0" wide by 36'0" deep.

[illegible]