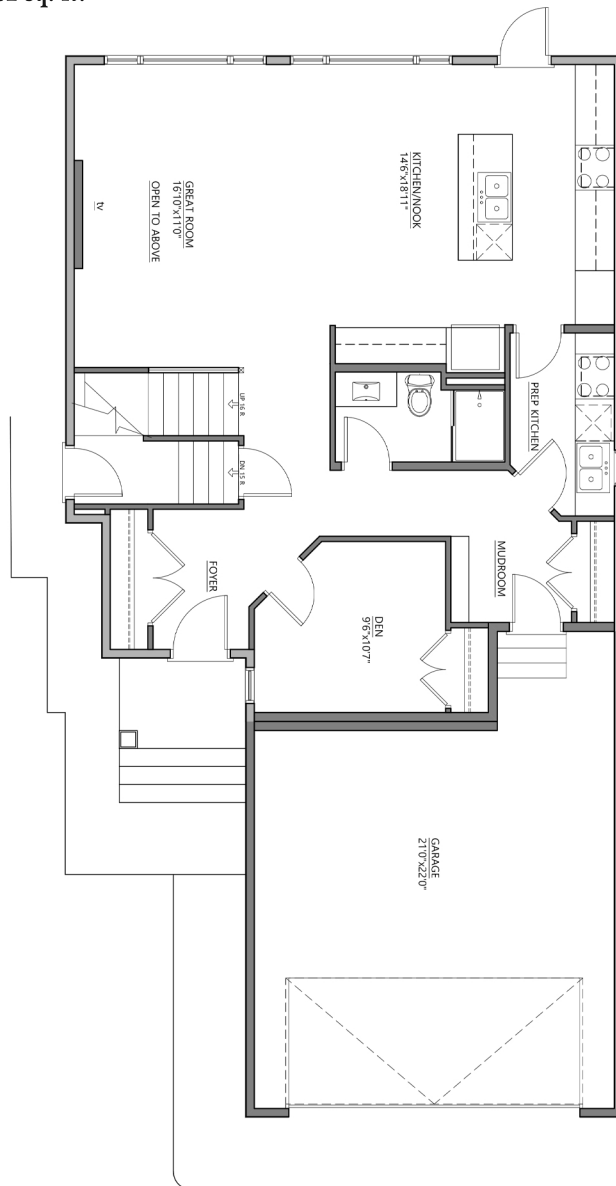


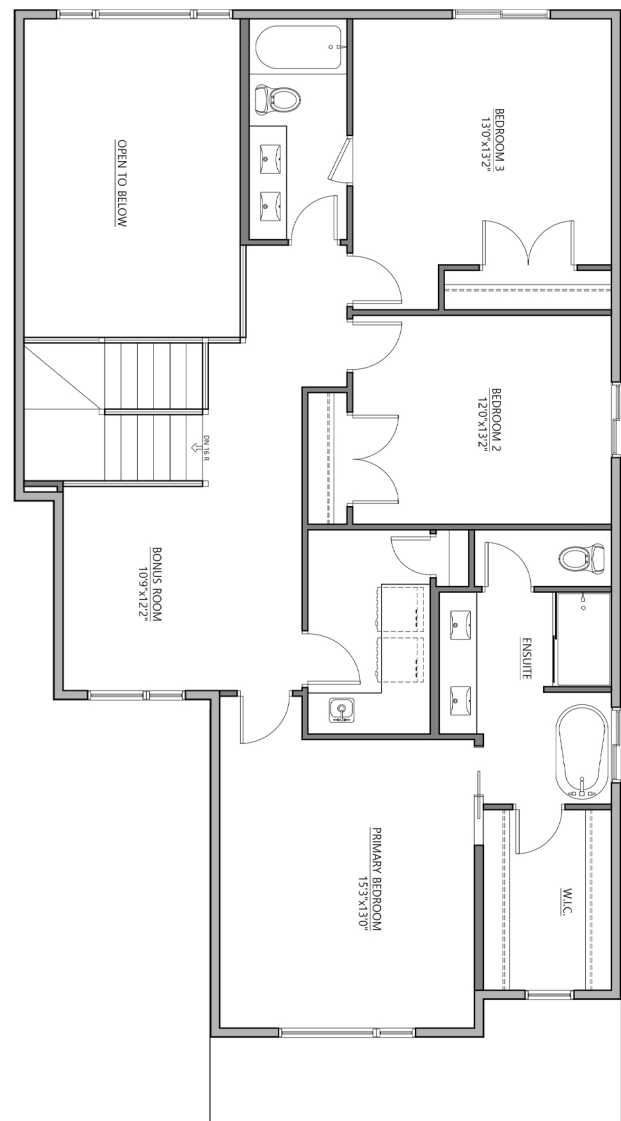
Main Floor Plan

1062 sq. ft.



Upper Floor Plan

1271.96 sq. ft.



Edmonton Region

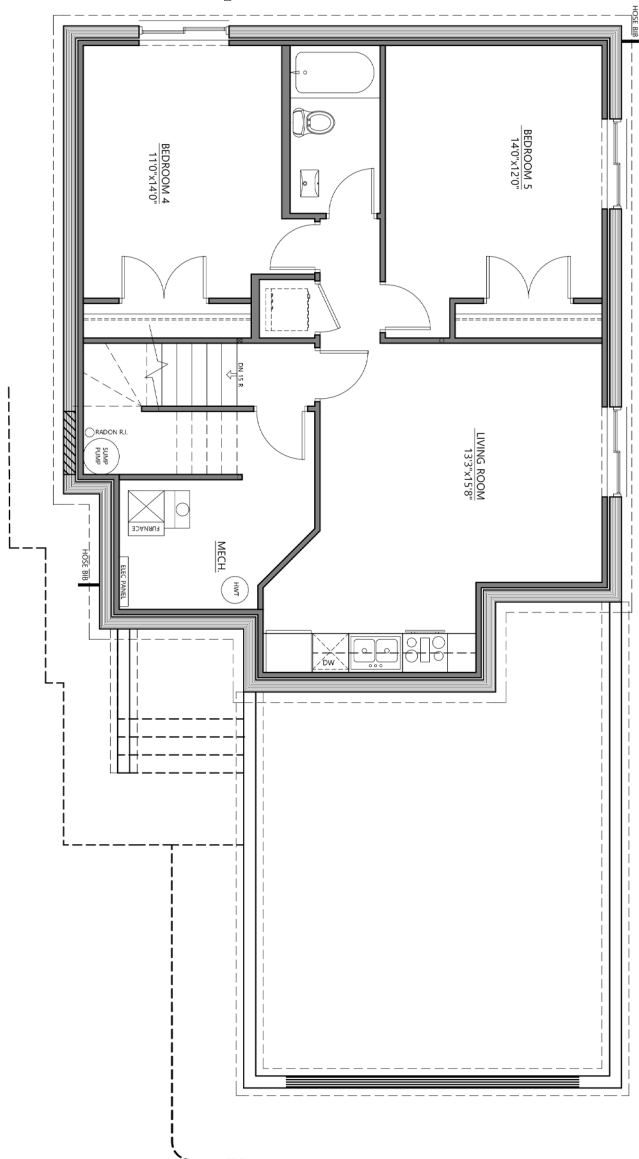


*Floor plan dimensions and specifications are approximate and subject to change without notice.

211
PATERSON LINK SW
2334 sq. ft.

Basement

930.25 sq. ft.



FEATURES & UPGRADES:

- Front attached 2 car garage
- Main floor den
- Main floor and basement includes 9' ceilings
- Custom mudroom with bench and lockers
- Quartz countertops throughout the home
- Quartz backsplash for kitchen & Subway tile for pantry backsplash
- Painted MDF cabinetry with upgraded pulls and handles
- Walk through pantry
- 3 bedrooms with large bonus room
- Luxury vinyl plank for main and basement
- Carpet for second floor and stairs
- LED lighting throughout the home
- Gas range for main kitchen
- Triple pane windows
- Premium siding colors
- Two Bedroom legal secondary suite with second furnace, full bathroom
- Concrete sidewalk to private basement side entry