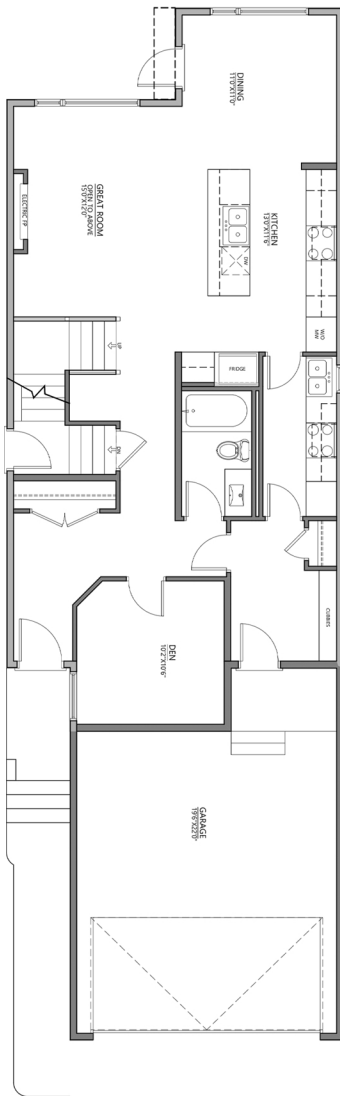




1507
PODERSKY PLACE SW
2355 sq. ft.

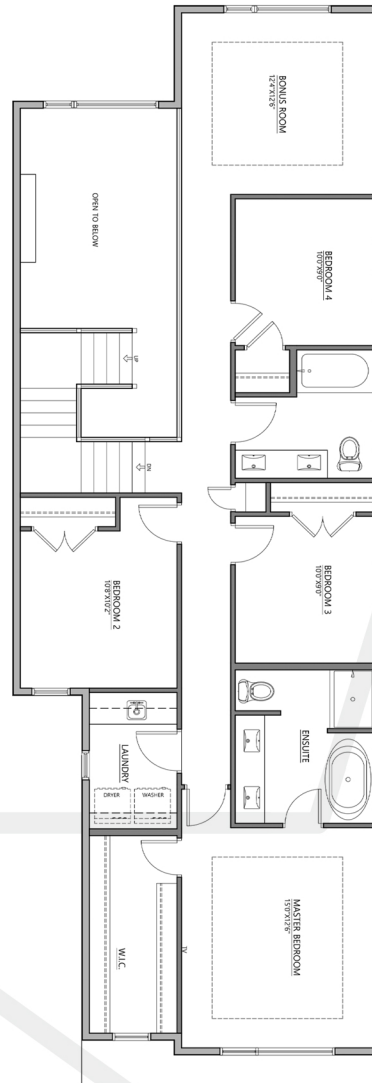
Main Floor Plan

1102 sq. ft.



Upper Floor Plan

1253 sq. ft.

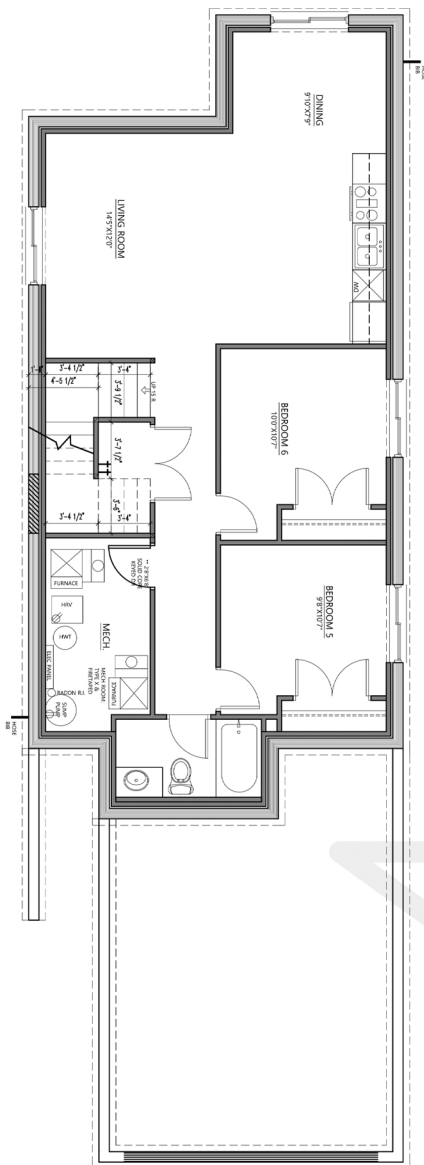




1507
PODERSKY PLACE SW
2355 sq. ft.

Optional Basement Suite

899 sq. ft.



FEATURES & UPGRADES:

- Front attached 2 car garage
- Main floor den
- Main floor and basement includes 9' ceilings
- Custom mudroom with bench and lockers
- Quartz countertops throughout the home
- Subway tile for kitchen backsplash
- Prefinished melamine panels with melamine white boxes
- Walk in pantry
- 4 bedrooms with large bonus room
- Engineered hardwood main floor
- Carpet for second floor and stairs
- LED lighting throughout the home
- Gas range for main kitchen
- Triple pane windows
- Premium siding colors
- Concrete sidewalk to private basement side entry