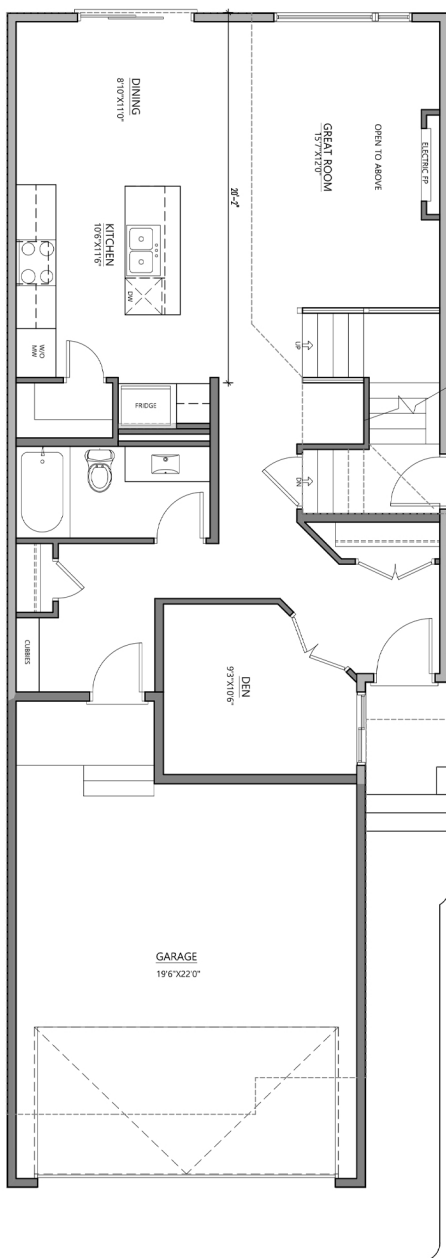




1295
PODERSKY PLACE SW
 2011 sq. ft.

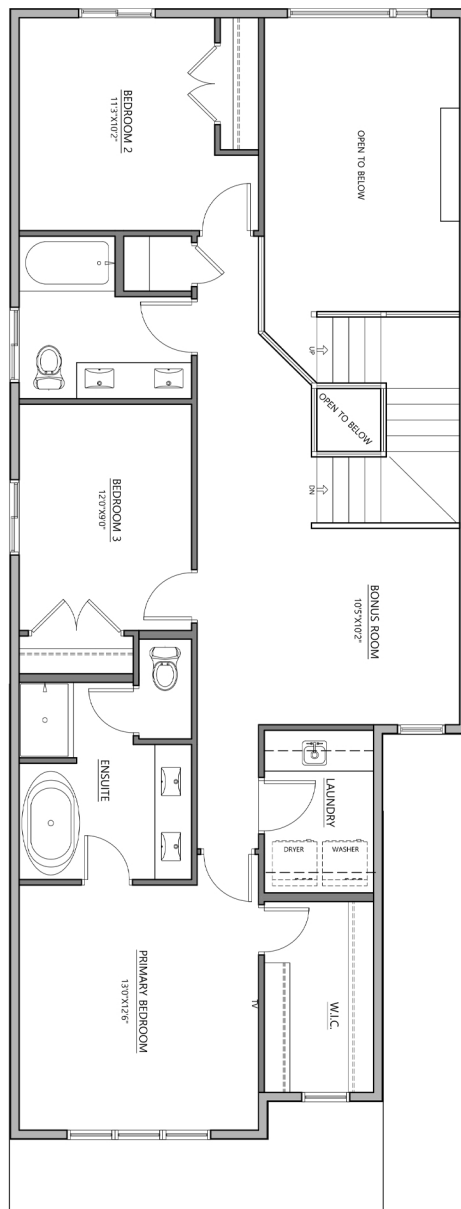
Main Floor Plan

948 sq. ft.



Upper Floor Plan

1063 sq. ft.

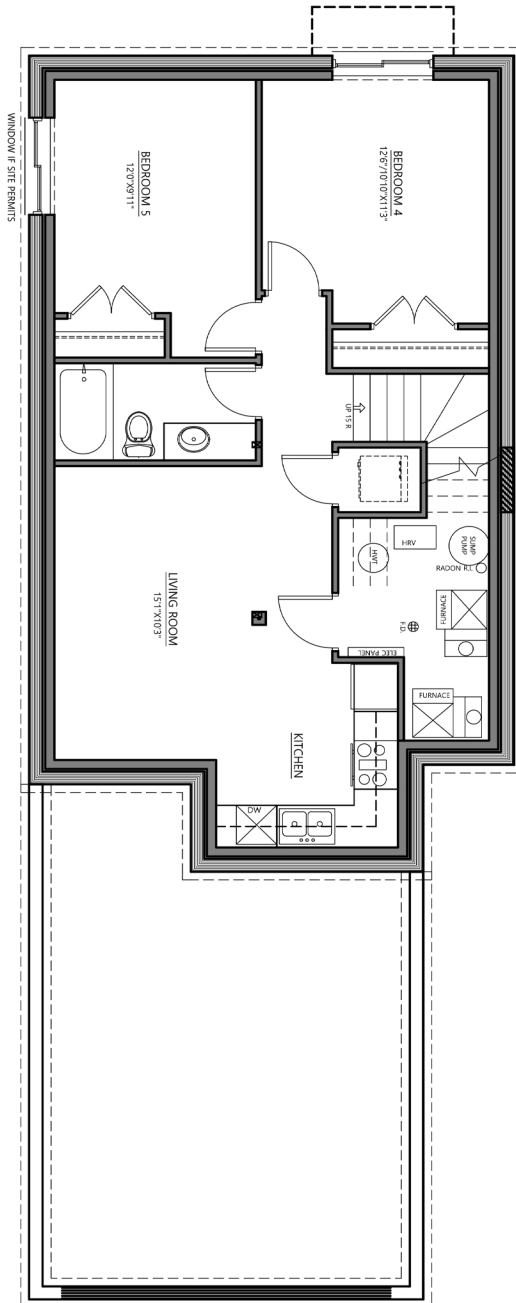




1295
PODERSKY PLACE SW
 2011 sq. ft.

Secondary Suite

780 sq. ft.



FEATURES & UPGRADES:

- Front attached 2 car garage
- Main floor den with full bathroom
- Main floor and basement includes 9' ceilings
- Custom mudroom with bench & lockers
- Quartz countertops throughout the home
- Subway tile for kitchen backsplash
- Painted Cabinetry with white melamine boxes
- Walk in pantry
- 3 bedrooms with large bonus room
- Engineered hardwood on main floor
- Carpet for second floor and stairs
- LED lighting throughout the home
- Gas range for main kitchen
- Triple pane windows
- Premium siding colors
- 2 Bedrooms legal secondary suite with second furnace, full bathroom and laundry
- Concrete sidewalk to private basement side entry with finished basement