

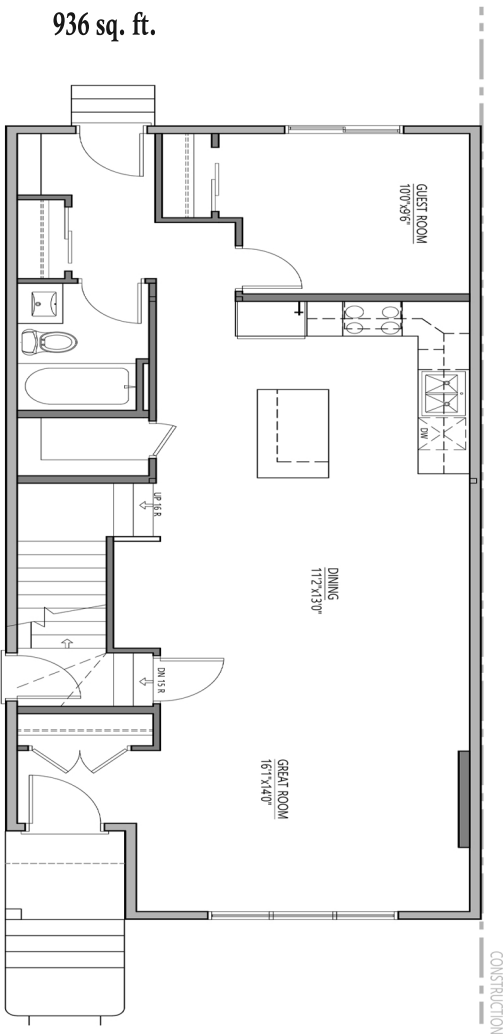


**FIVE STAR
HOMES**

6401 66 St
BEAUMONT, AB
1869 sq. ft.

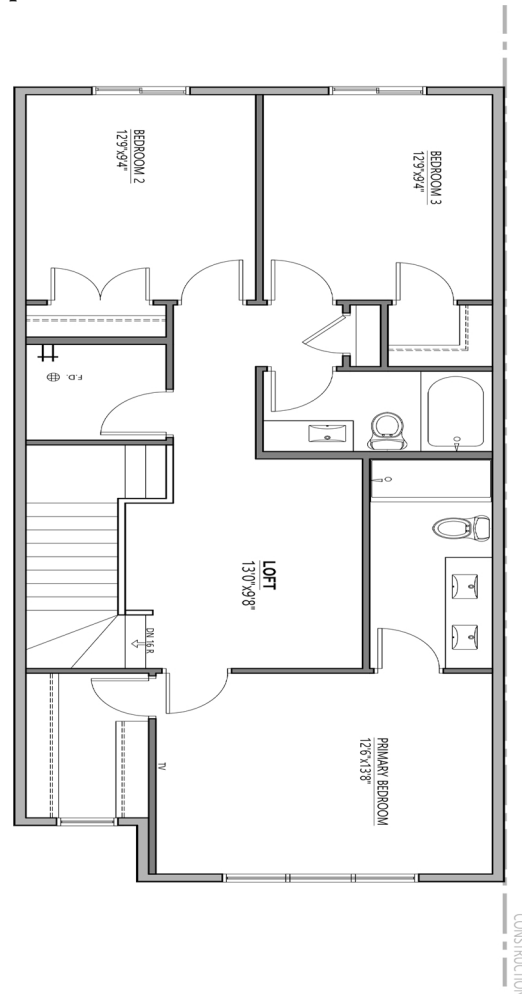
Main Floor Plan

936 sq. ft.



Upper Floor Plan

906 sq. ft.



Edmonton Region



*Floor plan dimensions and specifications are approximate and subject to change without notice.



FIVE STAR HOMES

6401 66 St
BEAUMONT, AB
 1869 sq. ft.

Secondary Suite

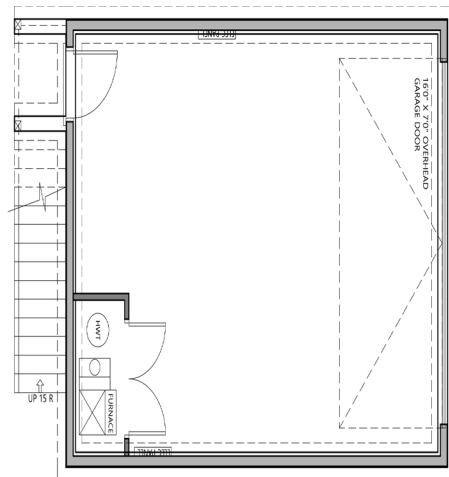
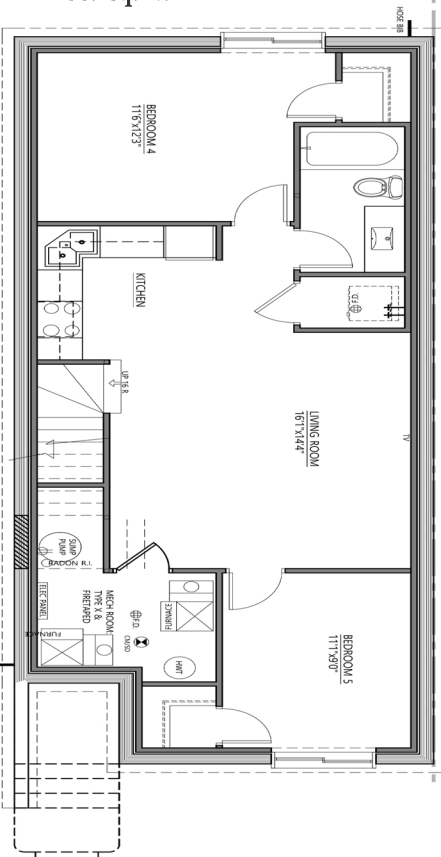
789 sq. ft.

Garage

520 sq. ft.

FEATURES & UPGRADES:

- Front attached 2 car garage
- Main floor den
- Main floor and basement includes 9' ceilings
- Custom mudroom with bench and lockers
- Quartz countertops throughout the home
- Subway tile for kitchen backsplash
- Prefinished melamine panels with melamine white boxes
- Walk in pantry
- 4 bedrooms with large bonus room
- Luxury vinyl plank for main and basement
- Carpet for second floor and stairs
- LED lighting throughout the home
- Gas range for main kitchen
- Triple pane windows
- Premium siding colors
- Two Bedroom legal secondary suite with second furnace, full bathroom, appliances and laundry
- Concrete sidewalk to private basement side entry



Garage Suite

520 sq. ft.

