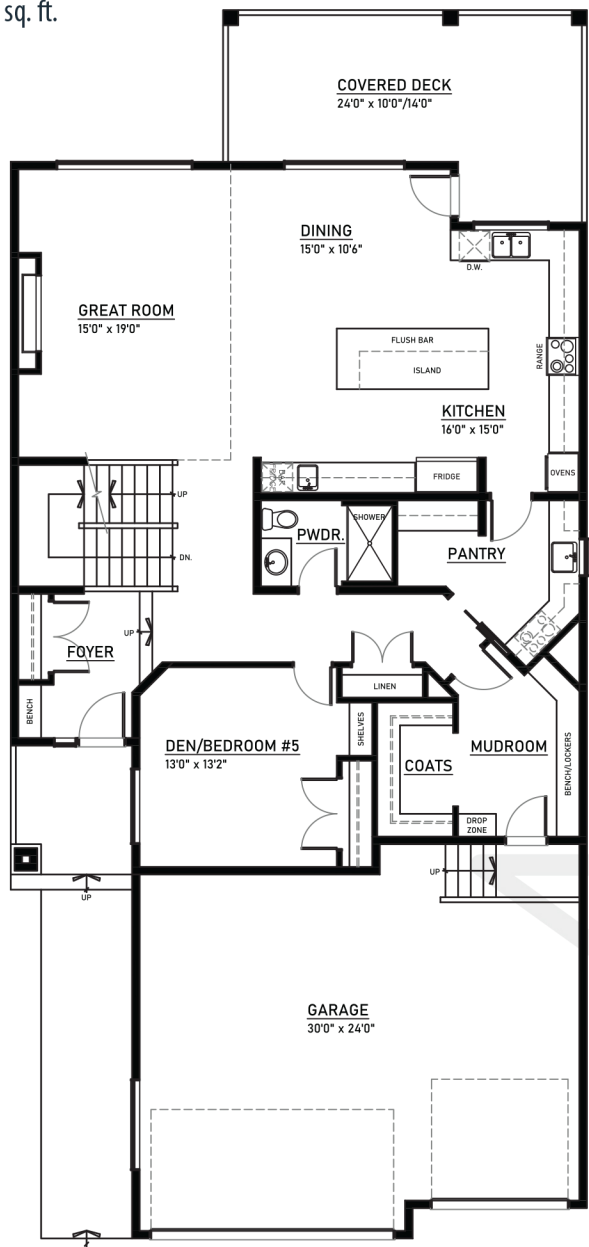




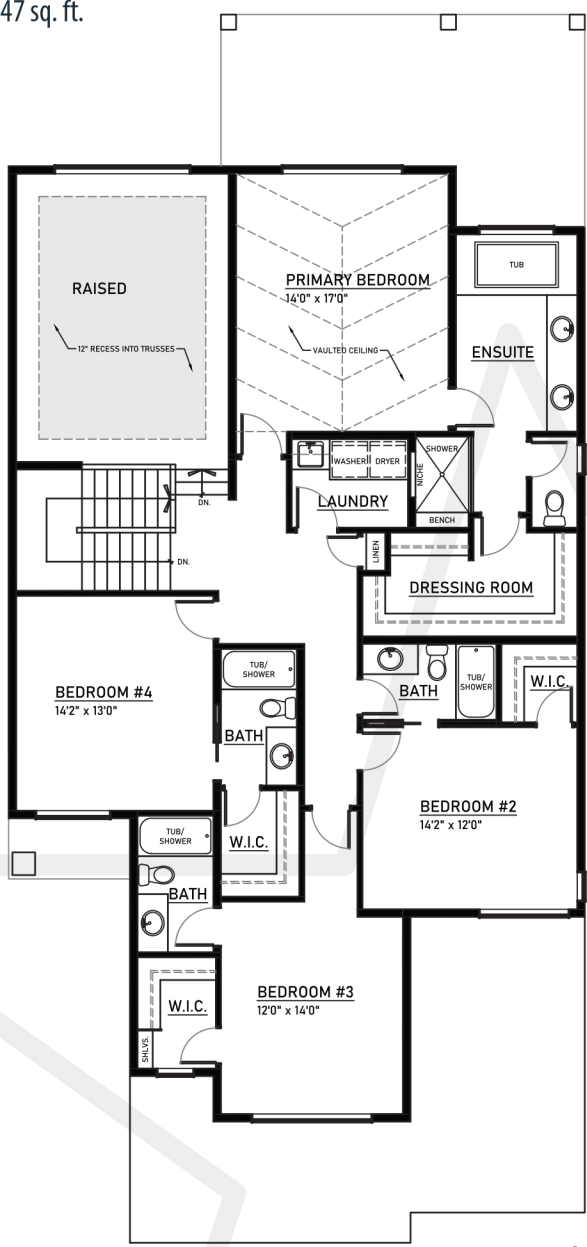
4466
SUZANNA CRESCENT
 3603 sq. ft.



Main Floor Plan
 1656 sq. ft.



Upper Floor Plan
 1947 sq. ft.



Edmonton Region



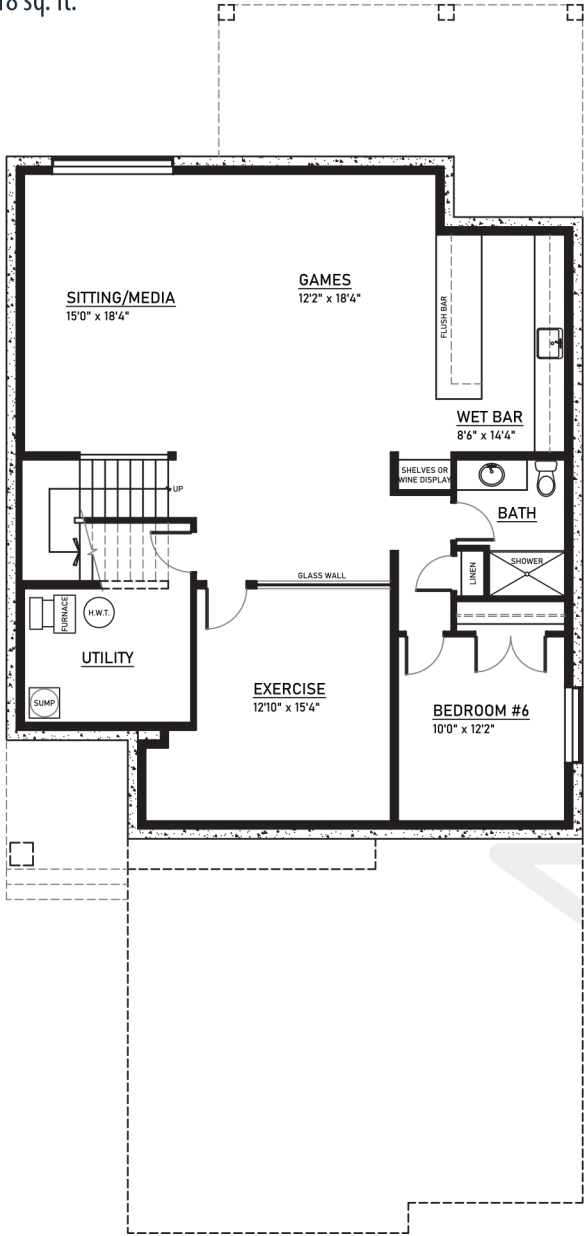
*Floor plan dimensions and specifications are approximate and subject to change without notice.



4466
SUZANNA CRESCENT
 3603 sq. ft.



Basement Floor Plan
 1418 sq. ft.



FEATURES & UPGRADES:

- 3 Car garage
- Main floor private den
- Main floor full wash
- Main floor includes 9' ceilings, while the second floor features upgraded 9' ceilings
- Custom vertical iron railings
- Custom mudroom with benches, lockers and built-in storage
- Expansive gourmet kitchen with oversized island, opening for full fridge/full freezer, wall ovens and beverage centre
- Walk through pantry with additional room for small appliances and coffee bar / ability to turn into a spice kitchen
- Walk out from the dining room to an enormous covered deck
- Great room with raised ceiling and gas fireplace with luxury detail
- Primary ensuite includes freestanding tub, double vanity, large walk in shower, and full custom dressing room
- Central bonus room with raised ceiling and an abundance of windows
- Basement features high ceilings and includes 5th bedroom with full bathroom
- Basement also includes a gym, recreational area, and wet bar
- AC for top 2 floors and heater for garage included
- Exposed aggregate driveway
- Stucco exterior
- Custom oversized wood window wells
- Summerside beach access