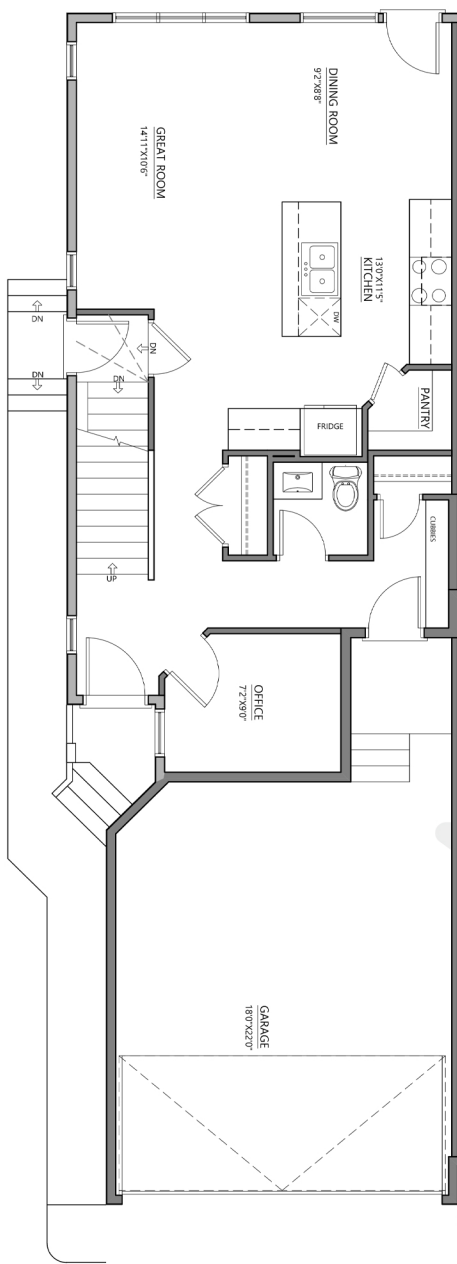




765
PAYIPWAT COMMON SW
1663 sq. ft.

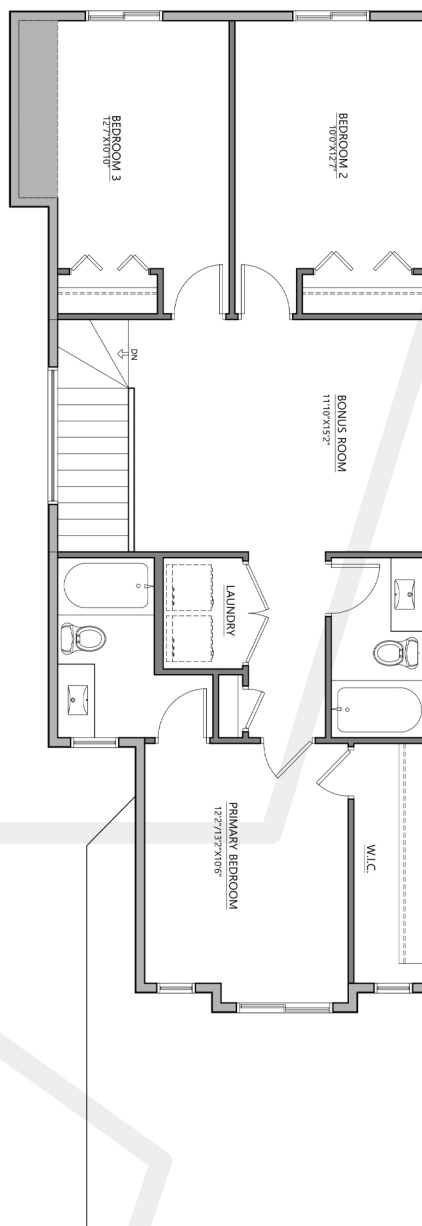
Main Floor Plan

741 sq. ft.



Upper Floor Plan

922 sq. ft.

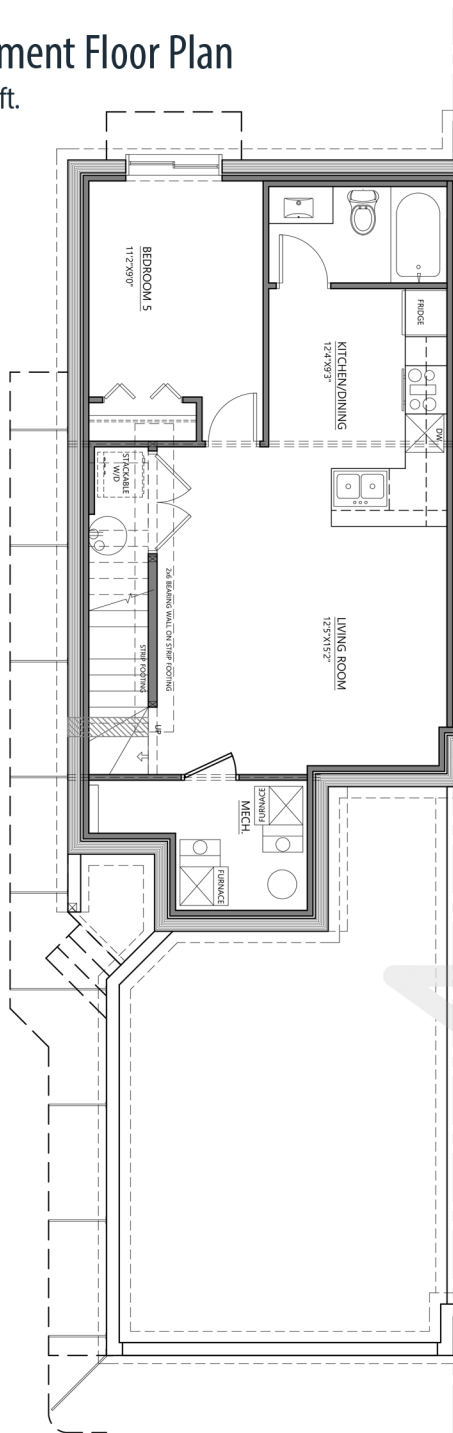




765
PAYIPWAT COMMON SW
1663 sq. ft.

Basement Floor Plan

621 sq. ft.



FEATURES & UPGRADES:

- Front attached 2 car garage
- Main floor den
- Main floor and basement includes 9' ceilings
- Custom mudroom with bench and lockers
- Quartz countertops throughout the home
- Subway tile for kitchen backsplash
- Prefinished melamine panels with melamine white boxes
- Walk in pantry
- 4 bedrooms with large bonus room
- Luxury vinyl plank for main and basement
- Carpet for second floor and stairs
- LED lighting throughout the home
- Gas range for main kitchen
- Triple pane windows
- Premium siding colors
- One Bedroom legal secondary suite with second furnace, full bathroom, appliances and laundry
- Concrete sidewalk to private basement side entry