



House with Inlaw Suite



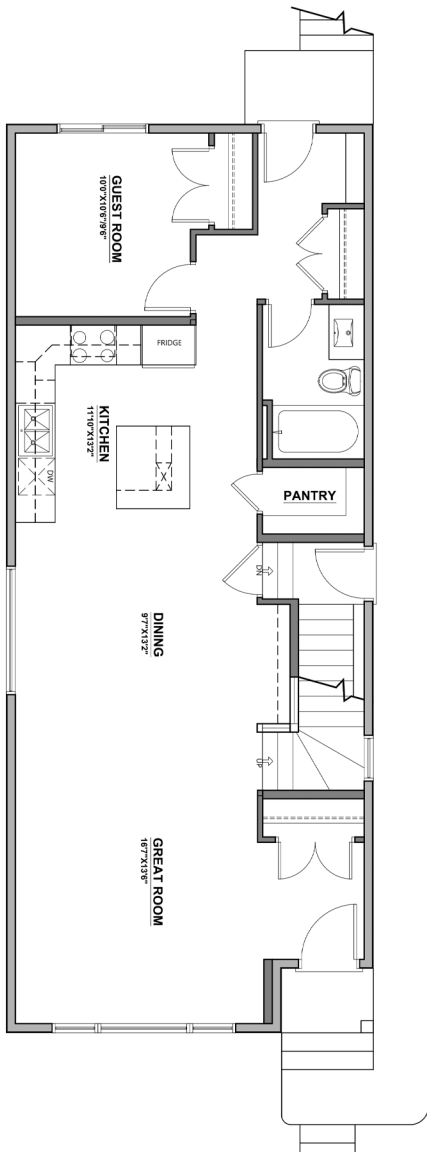
Garage with Garden Suite



758
PAYIPWAT COMMON SW
1907 sq. ft.

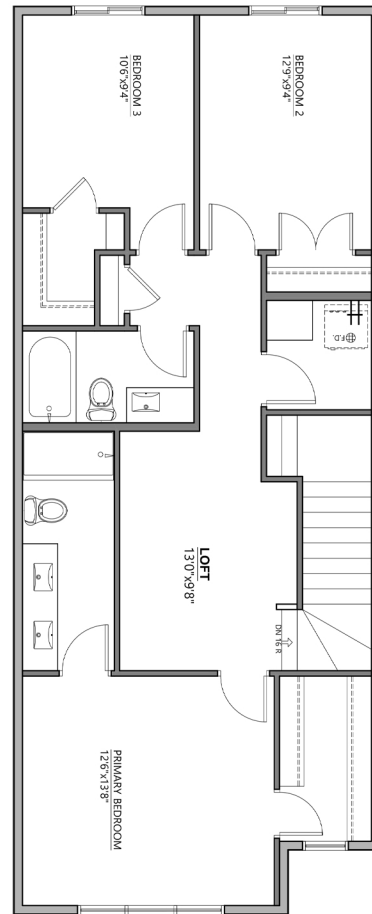
Main Floor Plan

973 sq. ft.



Upper Floor Plan

934 sq. ft.





House with Inlaw Suite



Garage with Garden Suite

758
PAYIPWAT COMMON SW
1907 sq. ft.

FEATURES & UPGRADES:

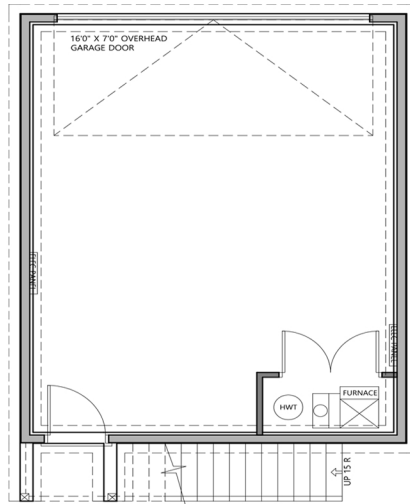
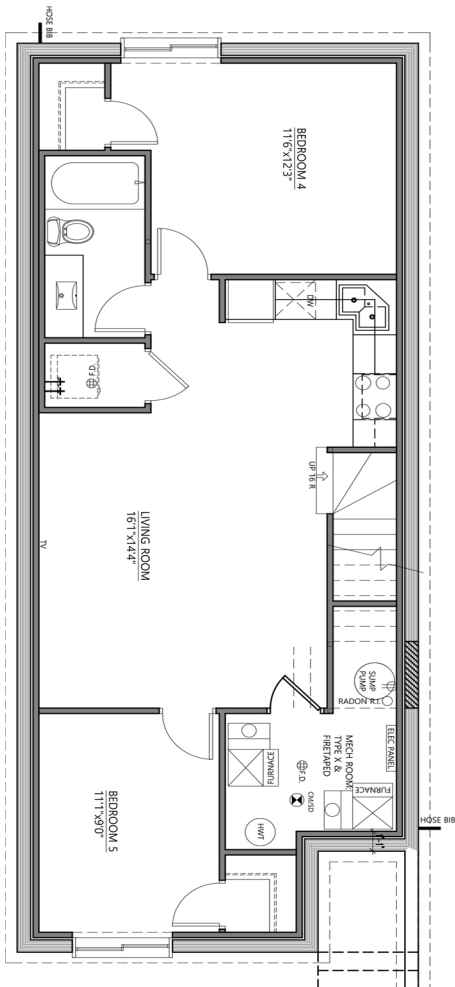
- Front attached 2 car garage
- Main floor den
- Main floor and basement includes 9' ceilings
- Custom mudroom with bench and lockers
- Quartz countertops throughout the home
- Subway tile for kitchen backsplash
- Prefinished melamine panels with melamine white boxes
- Walk in pantry
- 4 bedrooms with large bonus room
- Luxury vinyl plank for main and basement
- Carpet for second floor and stairs
- LED lighting throughout the home
- Gas range for main kitchen
- Triple pane windows
- Premium siding colors
- Two bedroom In law suite with separate furnace, full bathroom, appliances & laundry
- Concrete sidewalk to private basement side entry

Mother Inlaw Suite

790 sq. ft.

Garage

520 sq. ft.



Garage suite

520 sq. ft.

