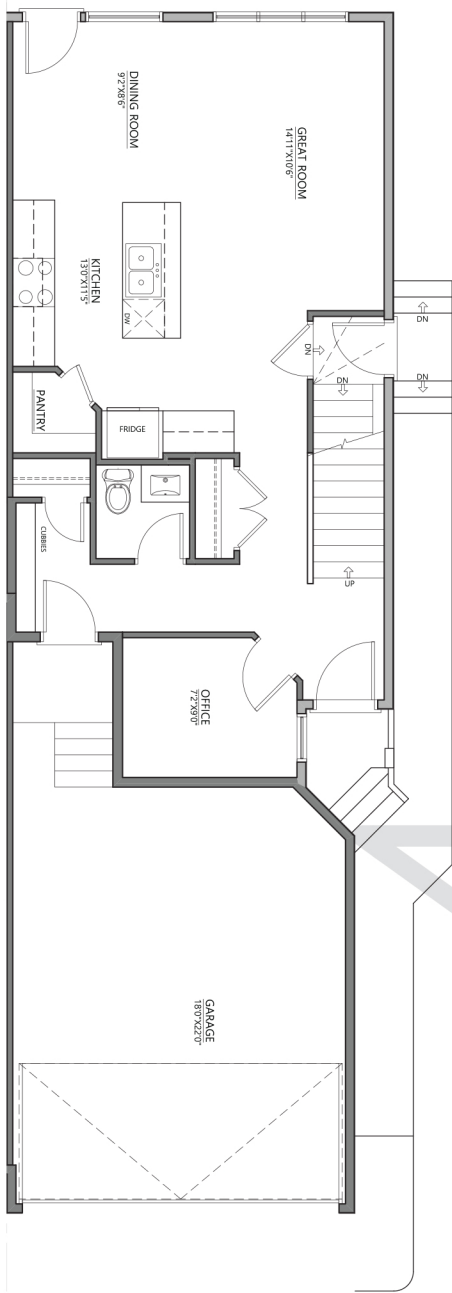




763
PAYIPWAT COMMON SW
1652 sq. ft.

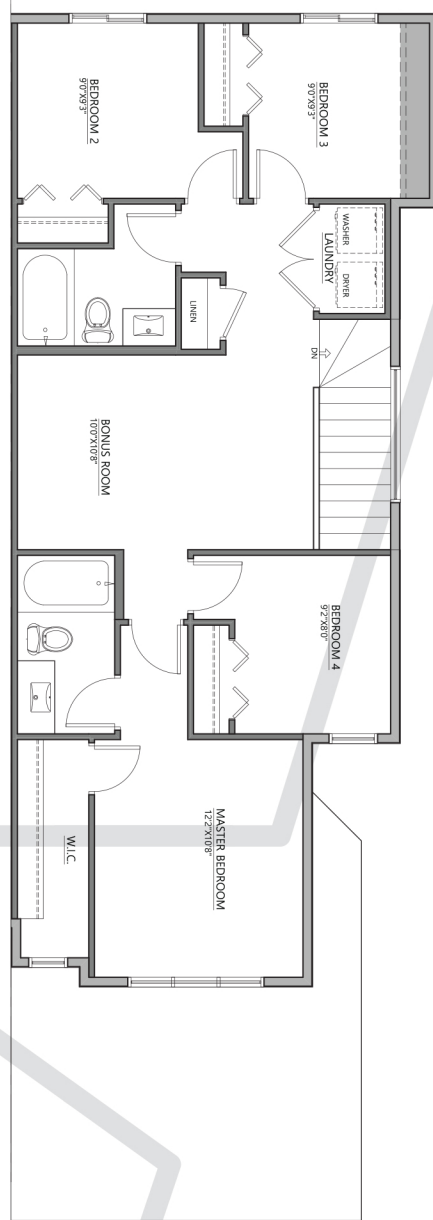
Main Floor Plan

741 sq. ft.



Upper Floor Plan

911 sq. ft.



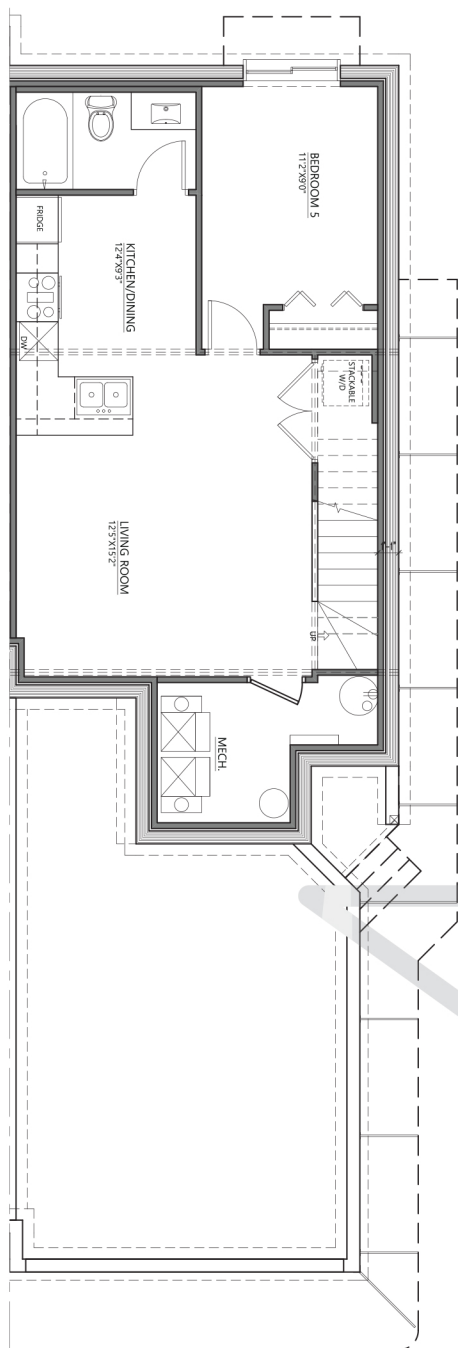
*Floor plan dimensions and specifications are approximate and subject to change without notice.



763
PAYIPWAT COMMON SW
1652 sq. ft.

Basement Floor Plan

622 sq. ft.



FEATURES & UPGRADES:

- Front attached 2 car garage
- Main floor den
- Main floor and basement includes 9' ceilings
- Custom mudroom with bench and lockers
- Quartz countertops throughout the home
- Subway tile for kitchen backsplash
- Prefinished melamine panels with melamine white boxes
- Walk in pantry
- 4 bedrooms with large bonus room
- Luxury vinyl plank for main and basement
- Carpet for second floor and stairs
- LED lighting throughout the home
- Gas range for main kitchen
- Triple pane windows
- Premium siding colors
- One Bedroom legal secondary suite with second furnace, full bathroom, appliances and laundry
- Concrete sidewalk to private basement side entry