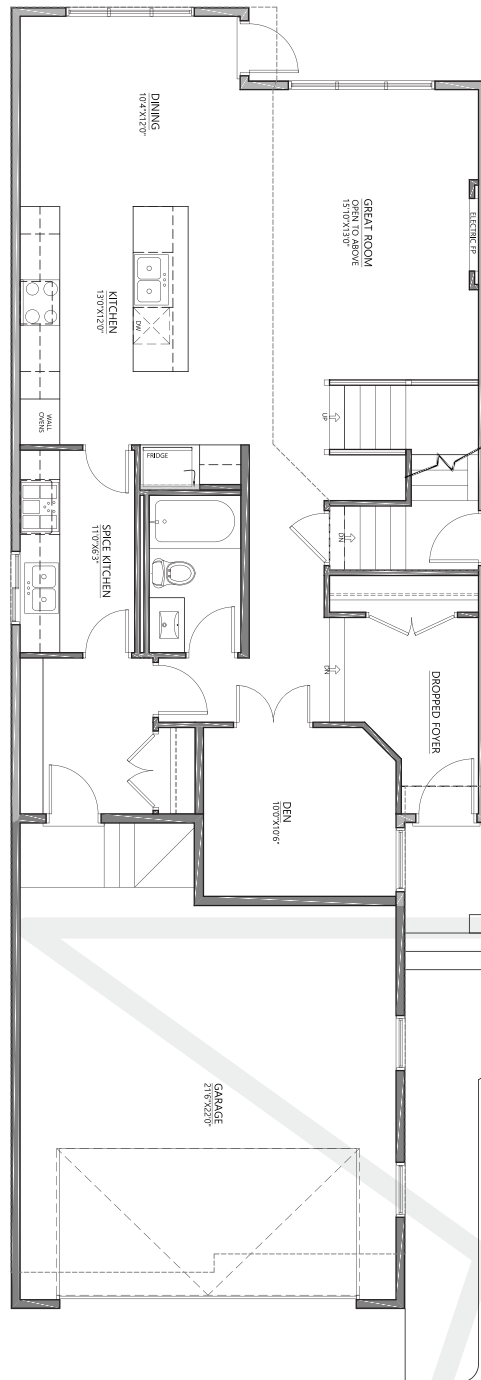




**1505**  
**PODERSKY PLACE SW**  
2479 sq. ft.

**Main Floor Plan**  
1157 sq. ft.

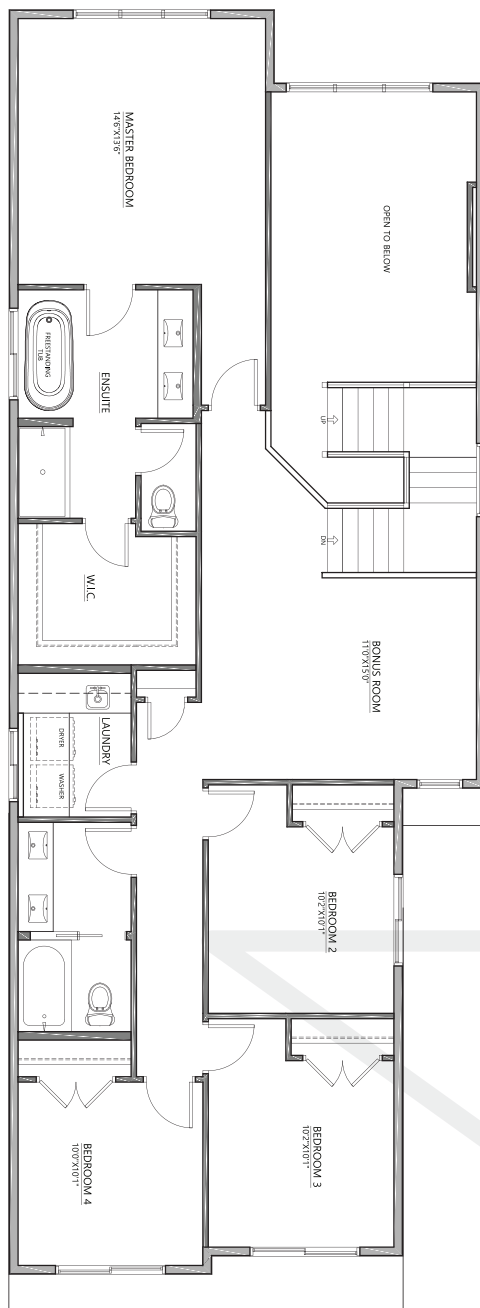




**1505**  
**PODERSKY PLACE SW**  
2479 sq. ft.

## Upper Floor Plan

1322 sq. ft.



### FEATURES & UPGRADES:

- Front attached 2 car garage
- Main floor den with full washroom on main floor
- Open to above main floor great room
- Main floor and basement includes 9 ft ceilings
- Custom mudroom with bench and lockers
- Quartz countertops throughout the home
- Gas range stove
- Subway tile for kitchen backsplash
- Painted mdf cabinets with melamine boxes
- Painted mdf shelving for closets
- Butler's pantry with sink and optional stove and hood fan
- 60 inch electric fireplace
- 5 inch engineered hardwood for for main floor
- 40oz carpet for second floor and stairs with 8lbs underlay
- 4 bedrooms with large bonus room
- LED lighting throughout the home
- Triple pane Windows
- Premium siding colors with manufactured stone for the exterior
- Side entrance to basement with potential of making a legal rental suite
- Maple painted railings with spindles