

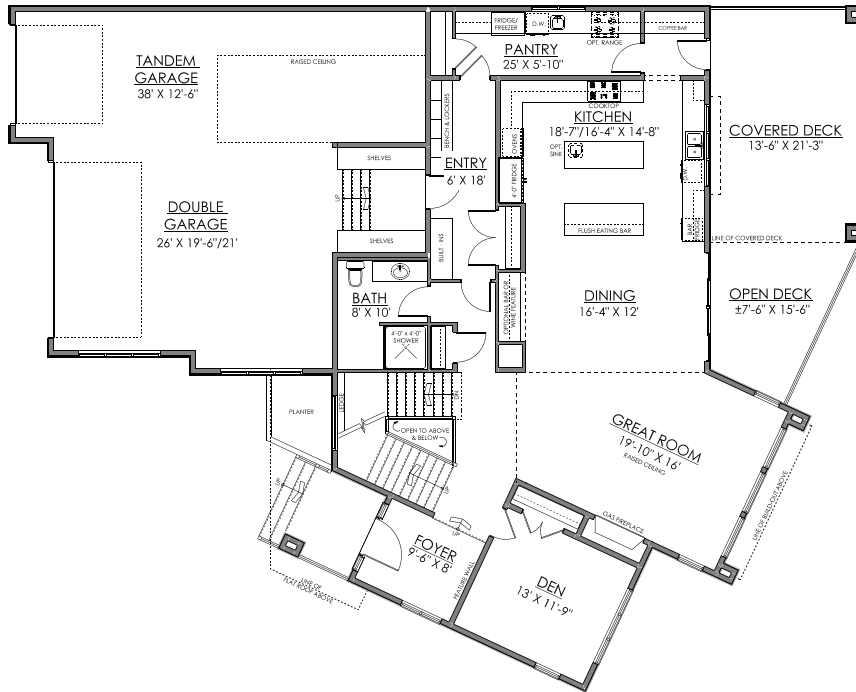


# THE WILLIAM

3900 sq. ft.

## Main Floor Plan

1793 sq. ft.



## Upper Floor Plan

2107 sq. ft.



Edmonton Region



\*Floor plan dimensions and specifications are approximate and subject to change without notice.

PLEASE CALL OR TEXT ROBBY: **780-709-0909**  
[info@fivestarthomes.ca](mailto:info@fivestarthomes.ca)

[f](https://www.facebook.com/fivestarthomesyeg) [@FIVESTARHOMESYEG](https://www.instagram.com/fivestarthomesyeg) | [WWW.FIVESTARHOMES.CA](http://WWW.FIVESTARHOMES.CA)

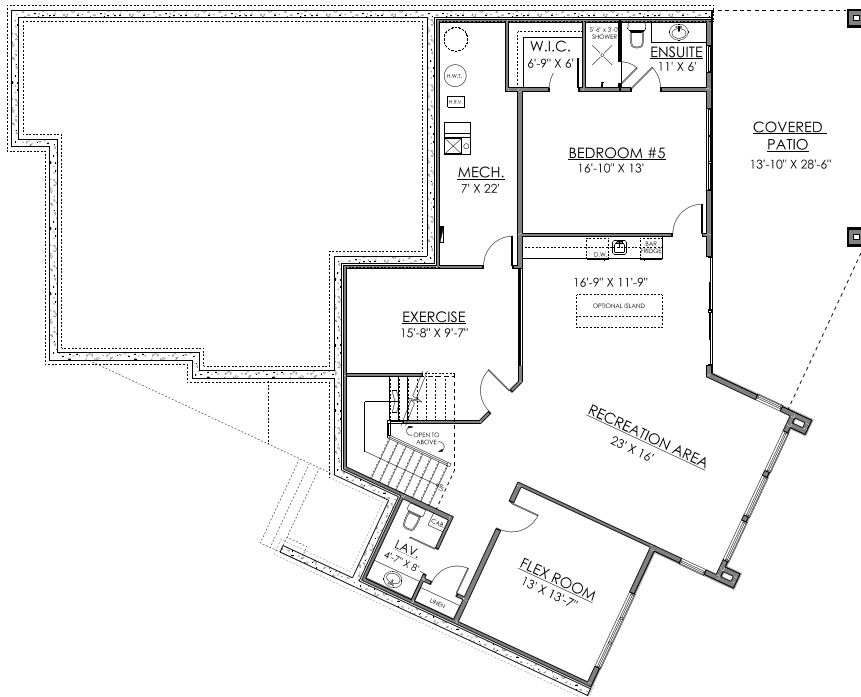


# THE WILLIAM

3900 sq. ft.

## Basement Floor Plan

1515 sq. ft.



### FEATURES & UPGRADES:

- 4 Car garage (includes tandem) with raised area for car lift and garage heater
- Central air conditioning
- Walk out to an enormous covered deck that looks onto the Jagare Ridge golf course
- Main floor private den
- Main floor includes grand 10' ceilings, while the second floor features upgraded 9' ceilings
- Custom mudroom with benches, lockers and built-in storage
- Expansive gourmet kitchen with two islands, over-sized fridge, wall ovens and beverage centre
- Walk through pantry with additional room for a freezer and coffee bar
- Walk out from the dining room and coffee bar to an enormous covered deck
- Great room with raised ceiling and gas fireplace with luxury detail
- Primary bedroom includes a coffee/wet bar, free standing tub, double vanity, large walk in shower, and full dressing room
- Central bonus room with raised ceiling and an abundance of windows
- Fully finished walkout basement with 9' ceilings includes 5th bedroom with ensuite and walk in closet
- Basement also includes a gym, flex room, recreational area, half bath and wet bar
- Basement in floor heating
- Walk right out to the covered patio and exclusive lot
- Interior and exterior speakers included
- Security cameras rough in
- Hardwood stairs with custom iron railings