

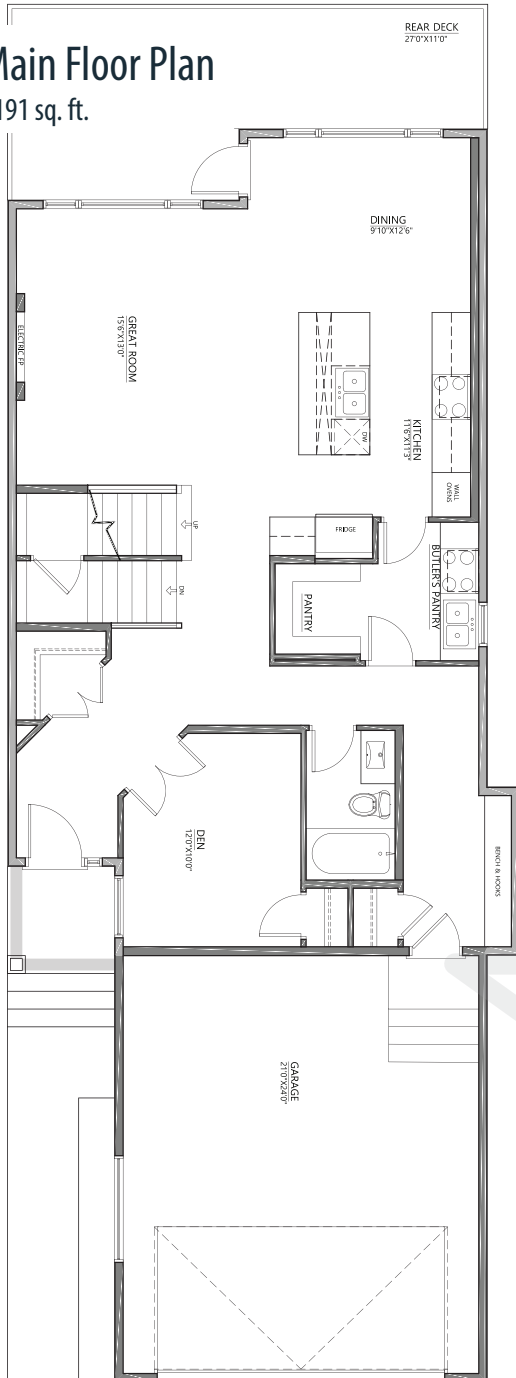


**3228 PARKER LOOP SW**

2696 sq. ft.

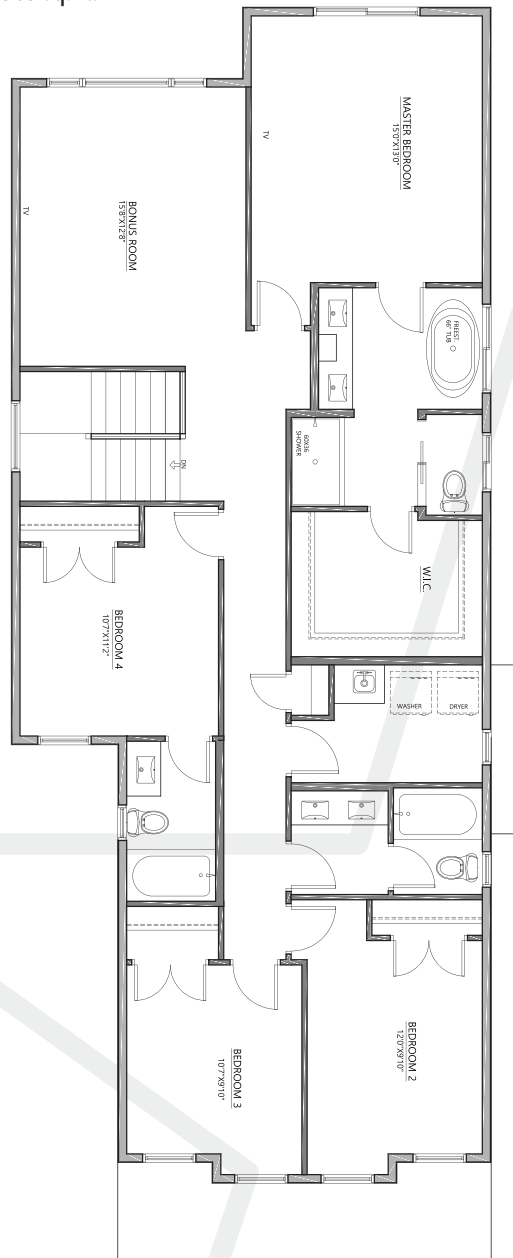
**Main Floor Plan**

1191 sq. ft.



**Upper Floor Plan**

1505 sq. ft.



\*Floor plan dimensions and specifications are approximate and subject to change without notice.

PLEASE CALL OR TEXT ROBBY: **780-709-0909**  
[info@fivestarthomes.ca](mailto:info@fivestarthomes.ca)

@FIVESTARHOMESYEG | [WWW.FIVESTARHOMES.CA](http://WWW.FIVESTARHOMES.CA)

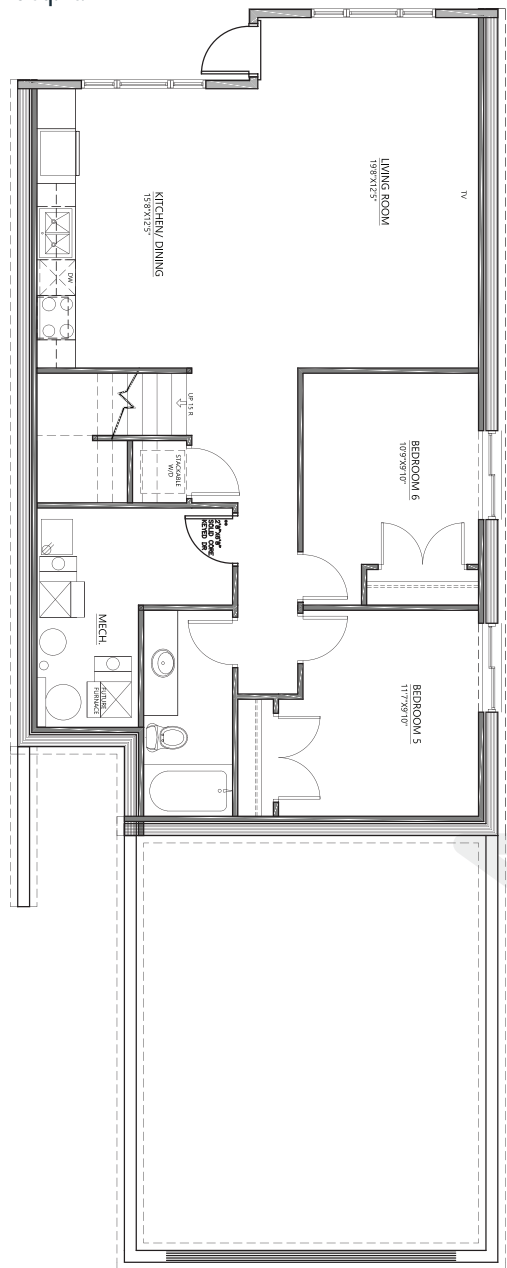


**3228 PARKER LOOP SW**

2696 sq. ft.

### Basement Floor Plan

926 sq. ft.



Edmonton Region



\*Floor plan dimensions and specifications are approximate and subject to change without notice.

PLEASE CALL OR TEXT ROBBY: **780-709-0909**  
info@fivestarthomes.ca

@FIVESTARHOMESYEG | WWW.FIVESTARHOMES.CA